

Cutaneous leishmaniasis

Richard Reithinger, Jean-Claude Dujardin, Hechmi Louzir, Claude Pirmez, Bruce Alexander, Simon Brooker

Cutaneous leishmaniasis is endemic in the tropics and neotropics. It is often referred to as a group of diseases because of the varied spectrum of clinical manifestations, which range from small cutaneous nodules to gross mucosal tissue destruction. Cutaneous leishmaniasis can be caused by several *Leishmania* spp and is transmitted to human beings and animals by sandflies. Despite its increasing worldwide incidence, but because it is rarely fatal, cutaneous leishmaniasis has become one of the so-called neglected diseases, with little interest by financial donors, public-health authorities, and professionals to implement activities to research, prevent, or control the disease. In endemic countries, diagnosis is often made clinically and, if possible, by microscopic examination of lesion biopsy smears to visually confirm leishmania parasites as the cause. The use of more sophisticated diagnostic techniques that allow for species identification is usually restricted to research or clinical settings in non-endemic countries. The mainstays of cutaneous leishmaniasis treatment are pentavalent antimonials, with new oral and topical treatment alternatives only becoming available within the past few years; a vaccine currently does not exist. Disease prevention and control are difficult because of the complexity of cutaneous leishmaniasis epizootology, and the few options available for effective vector control.

Introduction

Leishmania parasites are the causal agents of leishmaniasis, a group of protozoan diseases transmitted to mammals, including human beings, by phlebotomine sandflies. Globally, there are an estimated 1.5–2 million new cases and 70 000 deaths each year, and 350 million people are at risk of infection and disease.¹ Morbidity and mortality because of the leishmaniasis cause an estimated 2.4 million disability-adjusted life-years.¹

The leishmaniasis are characterised by a spectrum of clinical manifestations: ulcerative skin lesions developing at the site of the sandfly bite (localised cutaneous leishmaniasis [LCL]); multiple non-ulcerative nodules (diffuse cutaneous leishmaniasis [DCL]); destructive mucosal inflammation (mucosal leishmaniasis); and disseminated visceral infection (visceral leishmaniasis). The clinical spectrum observed in patients indicates the complexity of leishmaniasis epizootology: several *Leishmania* spp can cause disease (table 1), and many sandfly and mammalian species have been implicated as vectors and reservoir hosts, respectively.

We critically review the most recent data on the burden of the cutaneous leishmaniasis, namely LCL, DCL, and mucosal leishmaniasis, their epidemiology, clinical pathology, diagnosis, treatment, prevention, and control. Visceral leishmaniasis has been reviewed elsewhere;^{2–4} we did not review post kala-azar dermal leishmaniasis, because this is a manifestation seen in patients with visceral leishmaniasis after apparent clinical cure.

Epidemiology and ecology

Disease burden and distribution

Cutaneous leishmaniasis is endemic in more than 70 countries worldwide, and 90% of cases occur in Afghanistan, Algeria, Brazil, Pakistan, Peru, Saudi Arabia, and Syria (figure 1).⁵ Surveillance data indicate that the global number of cases has increased during the past decade, as documented in Afghanistan,⁶ Bolivia,⁷ Brazil,⁸ Colombia,^{7,9} Peru,⁷ and Syria.¹⁰ Such

increases can be explained in part by improved diagnosis and case notification,¹¹ but are also a result of inadequate vector or reservoir control, increased detection of cutaneous leishmaniasis associated with opportunistic infections (eg, HIV/AIDS),¹² and the emergence of antileishmanial drug resistance.¹³ However, because

Lancet Infect Dis 2007; 7: 581–96

Clinical Trials Area, Westat, Rockville, MD, USA (R Reithinger PhD); Department of Immunology and Tropical Medicine, George Washington University School of Medicine and Health Sciences, Washington, DC, USA (R Reithinger); Department of Protozoology, Prince Leopold Institute for Tropical Medicine, Antwerp, Belgium (J-C Dujardin PhD); Laboratory of Immunology, Pasteur Institute, Tunis, Tunisia (H Louzir MD); Department of Biochemistry and Molecular Biology, Oswaldo Cruz Institute, Rio de Janeiro, Brazil (C Pirmez PhD); Molecular and Biochemical Parasitology Group, Liverpool School of Tropical Medicine, Liverpool,

	Main clinical pathology	Transmission cycle	Main geographical distribution
New World <i>Leishmania</i> spp			
<i>L (Viannia) braziliensis</i>	LCL, mucosal	Zoonotic	South America, parts of Central America, Mexico
<i>L (Viannia) panamensis</i>	LCL, mucosal	Zoonotic	Northern South America and southern Central America
<i>L (Viannia) peruviana</i>	LCL	Zoonotic	Peru
<i>L (Viannia) guyanensis</i>	LCL	Zoonotic	South America
<i>L (Viannia) lainsoni</i>	LCL	Zoonotic	South America
<i>L (Viannia) colombienseis</i>	LCL	Zoonotic	Northern South America
<i>L (Leishmania) amazonensis</i>	LCL, DCL	Zoonotic	South America
<i>L (Leishmania) mexicana</i>	LCL, DCL	Zoonotic	Central America, Mexico, USA
<i>L (Leishmania) pifanoi</i>	LCL	Zoonotic	South America
<i>L (Leishmania) venezuelensis</i>	LCL	Zoonotic	Northern South America
<i>L (Leishmania) garnhami</i>	LCL	Zoonotic	South America
Old World <i>Leishmania</i> spp			
<i>L (Leishmania) aethiopsica</i>	LCL, DCL	Zoonotic	Ethiopia, Kenya
<i>L (Leishmania) killicki</i>	LCL	Zoonotic	North Africa
<i>L (Leishmania) major</i>	LCL	Zoonotic	Central Asia, north Africa, middle east, East Africa
<i>L (Leishmania) tropica</i>	LCL	Anthroponotic	Central Asia, middle east, parts of north Africa, southeast Asia
<i>L (Leishmania) donovani</i>	Visceral, LCL	Anthroponotic	Africa, central Asia, southeast Asia
Old and New World <i>Leishmania</i> spp			
<i>L (Leishmania) infantum</i>	Visceral, LCL	Zoonotic	Europe, north Africa, Central America, South America

LCL=localised cutaneous leishmaniasis. DCL=diffuse cutaneous leishmaniasis. *Subgenus is given in parentheses. Southeast Asia includes the Indian subcontinent and China

Table 1: Species* of *Leishmania* that cause human disease

UK (B Alexander PhD); and
 Department of Infectious and
 Tropical Diseases, London
 School of Hygiene and Tropical
 Medicine, London, UK
 (R Reithinger, S Brooker DPhil)

Correspondence to:
 Dr Richard Reithinger,
 Clinical Trials Area, Westat,
 1441 W Montgomery Ave,
 Rockville, MD 20850, USA.
 Tel +1 703 838 2852;
 reithinger@yahoo.co.uk

many infections are symptomless or misdiagnosed,¹⁴ the global burden of cutaneous leishmaniasis is likely to be underestimated.

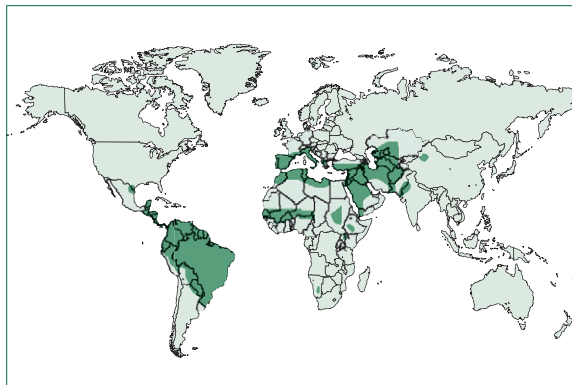


Figure 1: Geographical distribution of the cutaneous leishmaniasis

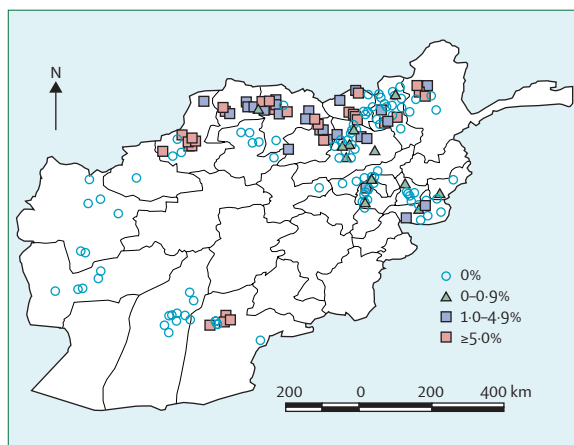


Figure 2: Spatial epidemiology of cutaneous leishmaniasis in Afghanistan

Geographical information systems (GIS) and remote sensing can help identify important geographical risk factors and stratify a region into different areas of transmission risk, thereby providing a potentially valuable tool to help guide cutaneous leishmaniasis control. As for other vector-borne diseases, cutaneous leishmaniasis occurrence is likely to map vector distribution and abundance. In Afghanistan, cutaneous leishmaniasis is thought to be caused predominantly by *Leishmania tropica*, transmitted anthroponotically by the sandfly *Phlebotomus sergenti*, and to a lesser extent by *Leishmania major*, transmitted zoonotically by *Phlebotomus papatasi*. To help identify priority areas for control, there is a requirement to delineate and understand the spatial distribution of cutaneous leishmaniasis. Therefore, between 2003 and 2005, a nationwide assessment was undertaken based on household surveys among 374 randomly selected villages. Although the overall prevalence of active cutaneous leishmaniasis was low (1.9%), epidemiological patterns varied substantially between villages, with prevalence highest in the south and northeast of the country. Even within endemic foci, there was tremendous heterogeneity in infection levels. Numerous factors act to determine such heterogeneities. At large spatial scales, these include environmental factors, such as temperature, rainfall, and relative humidity, which influence vector distribution and abundance. For example, experimental studies indicate that sandflies reproduce optimally at 23–28°C and at a relative humidity of 70–100%, whereas temperatures below 10°C and above 40°C are generally thought to be unfavourable for their survival. The potential of GIS and remote sensing has been shown in studies in Brazil and Colombia, where disease and vector distributions have been related to environmental information derived from satellite imagery.^{9,28,29} At smaller spatial scales, a complexity of other factors also influences cutaneous leishmaniasis transmission, including socioeconomic, behavioural, and microgeographical factors.

Transmission cycles are adapting to peridomestic environments and are spreading to previously non-endemic areas as a result of urbanisation and deforestation,¹⁵ with domestic animals as potential reservoirs.^{7,16} Additionally, economic hardship,¹⁷ natural disasters,¹⁸ armed conflict,¹⁹ and tourism²⁰ cause susceptible populations to migrate to areas endemic for cutaneous leishmaniasis, where exposure to infection results in noticeable epidemics. For example, whereas cutaneous leishmaniasis caused by *Leishmania tropica* was rare in Kabul, Afghanistan, before 1990, more than 25 000 mainly autochthonous cases were treated in 2003 (Reithinger R, unpublished data), with incidence estimated to be up to 67 500 new cases per year.⁶ New foci of *L. tropica* are also reported in Morocco,²¹ Israel,²² Syria,¹⁰ Iran,²³ and Pakistan.²⁴

Epidemiology

Several features characterise cutaneous leishmaniasis epidemiology. In established endemic areas, cutaneous leishmaniasis prevalence typically increases with age up to 15 years, after which prevalence levels off, presumably because of the acquisition of immunity. The infection can cluster within households, which is indicative of the short flight range of sandflies,²⁵ anthroponotic transmission,^{6,24} or genetic susceptibility.²⁶ Risk factors of disease commonly include sex (eg, sex bias usually points to behavioural patterns that increase vector exposure), age, household design and construction material, and presence of domestic animals.^{6,7,15,16,27}

Recent use of geographical information systems and remote sensing has allowed investigations of large-scale distributions and geographical risk factors of disease, but so far such research on cutaneous leishmaniasis has been scarce,^{9,28,29} partly because of the complexity of the transmission cycle (figure 2). Better understanding of the relations between environmental factors and distributions of sandflies and infection in a wide range of transmission settings would contribute to current, largely anecdotal or laboratory-based, information on the importance of the environment to transmission (figure 2).

Sandflies and the epizology of the cutaneous leishmaniasis

Leishmania infections typically originate via the bite of sandflies belonging to either *Phlebotomus* spp (in Europe, North Africa, the middle east, and Asia; figure 3) or *Lutzomyia* spp (from southern USA to northern Argentina; figure 3).²⁵ Non-vector transmission (eg, by accidental laboratory infection)³⁰ is rare. Cutaneous leishmaniasis transmission is either anthroponotic or zoonotic, depending on whether human beings are the main reservoir host (table 1).

Approximately 30 species or subspecies of sandflies are proven vectors, with more than 40 additional species probably involved in transmission.²⁵ Perhaps the most striking difference between so-called Old World

(ie, Africa, Europe, and Asia) and New World (ie, the Americas) cutaneous leishmaniasis is the ecological context of their respective transmission cycles: whereas Old World cutaneous leishmaniasis usually occurs in open semi-arid or even desert conditions, New World cutaneous leishmaniasis is still mostly associated with forests (figure 3). Cutaneous leishmaniasis foci have wide ecological variation and sandflies are able to find cool, shaded, humid microhabitats in each of them (eg, rock crevices or animal burrows in dry areas; tree buttress roots or leaf litter in forests).²⁵ Although transmission of most cutaneous leishmaniasis-causing *Leishmania* spp is zoonotic (table 1), man-made environmental modifications have led to the disease now being acquired within various ecological settings, including settlements established adjacent to primary forest,¹⁵ large-scale cultivation of agricultural crops (eg, coffee),³¹ and marginal neighbourhoods of cities.¹⁵ Sandflies will generally take blood from various hosts, and the loss of mammalian biodiversity as a result of deforestation, agricultural practices, and urbanisation can concentrate leishmania transmission by forcing vectors to feed on human beings and a progressively smaller number of synanthropic reservoirs (eg, domestication of *Lutzomyia whitmani* in Brazil).³²

Because mammals of several orders can be infected by the same *Leishmania* sp, it seems that more selective pressure is exerted on the parasite by the vector than the host. Natural leishmania infections are found in a range of non-human mammal hosts (mainly marsupials, rodents, edentates, and carnivores). So far, only a handful of reservoir hosts for the main *Leishmania* spp (ie, *L. infantum*, *L. peruviana*, *L. amazonensis*, *L. mexicana*, *L. guyanensis*, *L. panamensis*, *L. major*, and *L. aethiopicus*) have been reported;^{7,33} the reservoir hosts of *L. braziliensis* remain to be identified conclusively. Reservoir implication is difficult because it is often specific to the local epizootological context and depends on many variables (eg, host abundance and distribution, infectiousness to the sandfly vector),³⁴ which are rarely investigated.

Disease presentation and pathogenesis

Clinical symptoms

Several *Leishmania* spp can cause cutaneous leishmaniasis in human beings, although most infections probably remain symptomless.² The first sign of an infection is typically a small erythema that develops after a variable prepatent period at the site where an infected sandfly has bitten the host. The erythema develops into a papule, then a nodule that progressively ulcerates over a period of 2 weeks to 6 months to become the lesion that is characteristic of LCL.³⁵ LCL lesions vary in severity (eg, lesion size), clinical appearance (eg, classic LCL³⁵ vs disseminated leishmaniasis³⁶ vs leishmaniasis recidivans³⁵), and time to (spontaneous) cure (figure 4). Lymphatic spread and lymph-gland involvement, which may precede lesion development,³⁷ are common and there

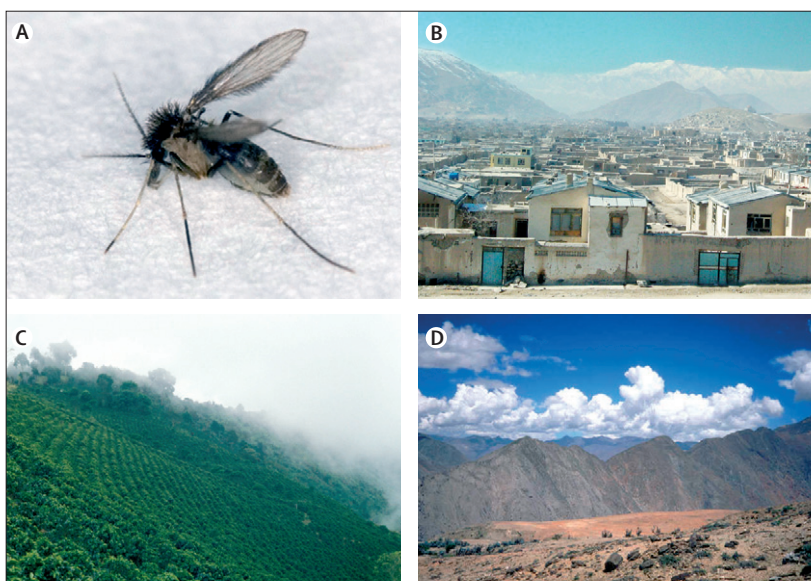


Figure 3: Diversity of habitats endemic for the cutaneous leishmaniasis

The distribution of the disease is dependent on the distribution and abundance of the sandfly vector, which in turn is strongly dependent on environmental factors. Sandflies (A: *Lutzomyia longipalpis*, vector of *Leishmania infantum*) and, hence, leishmaniasis, can be found in urban (B: Kabul, Afghanistan) or rural areas, in deserts, agricultural areas (C: coffee plantations in Colombia), or tropical rainforests, or below sea level or at high altitudes (D: Andean cordillera, Peru).



Figure 4: Clinical spectrum of the cutaneous leishmaniasis

The disease encompasses a range of clinical symptoms, including large ulcers (A: lesion caused by *L. tropica* in Kabul, Afghanistan), destruction of the mucosae (B: mucosal leishmaniasis caused by *L. braziliensis* in Cochabamba, Bolivia), and various secondary diseases (C: leishmaniasis recidivans caused by *L. tropica* in Kabul, Afghanistan). Most lesions are on areas exposed to the sandfly vectors (ie, face, hands, and feet). Clinical diagnosis can be difficult because of other causes leading to similar pathologies or home-based remedies that change the clinical picture typical of leishmaniasis (D: lesion treated with battery acid, Peru).

is a variable tendency for lesions to self-cure within approximately 2–6 months (eg, *L. major*),^{38–44} 3–9 months (eg, *L. mexicana*),^{45–48} or 6–15 months (eg, *L. tropica*,⁴⁹ *L. braziliensis*,^{45,47,48} *L. panamensis*^{45,50–53}) of disease onset.

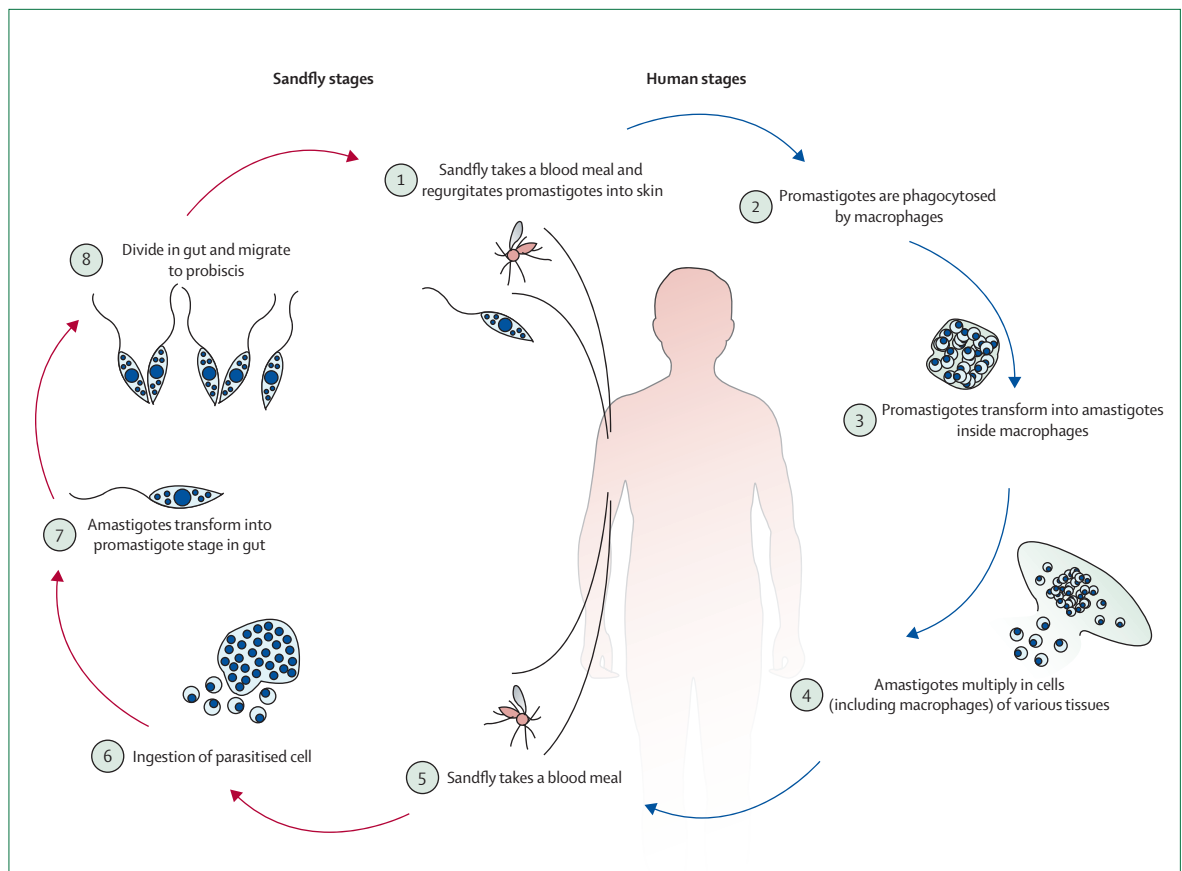


Figure 5: Life cycle of leishmania parasites

When biting their hosts, infected sandflies regurgitate leishmania promastigotes into the skin (1),⁶⁴ which invade or are phagocytosed by local or recruited host cells, mainly macrophages (2).⁶⁵ Within the phagolysosomes of resident macrophages, promastigotes become amastigotes (3). Amastigotes replicate and may then infect additional macrophages, either locally or in distant tissues after dissemination (4). When blood-feeding on an infected host (5), naive sandflies become infected with amastigotes (6), which transform back into promastigotes in the sandfly's gut (depending on *Leishmania* spp, different regions of the gut will be parasitised; 7). The parasites then migrate to the sandfly's proboscis (8), thus completing the leishmania life cycle. Adapted from the US Centers for Disease Control and Prevention.

Spontaneous healing usually results in lifelong protection from disease, which may or may not be restricted to the same *Leishmania* spp. Resolution of disease results in a lifelong cutaneous scar, which, depending on its size and location, may cause substantial trauma in affected individuals.⁵⁴

In DCL, which is seen rarely in parts of South and Central America, Ethiopia, and Kenya, parasite-laden, non-ulcerative nodules disseminate from the initial site of infection and may cover a patient's entire body.³⁵ Compared with LCL, DCL is difficult to treat and patients do not self-cure.

Although mucosal leishmaniasis can be caused by *L panamensis*,⁵⁵ *L guyanensis*,⁵⁶ *L amazonensis*,⁵⁷ *L major*,⁵⁸ *L tropica*,⁵⁹ and *L infantum*,⁶⁰ it is most commonly associated with *L braziliensis*;^{7,61} thus, barring exceptions,⁵⁸⁻⁶⁰ it is usually limited to South America. Mucosal involvement is the most serious complication in *L braziliensis* infections and can lead to disfiguring and life-threatening mucosal leishmaniasis (also known as espundia) in a varying proportion of patients. In most

endemic areas, 1–10% of LCL infections result in mucosal leishmaniasis 1–5 years after LCL has healed,^{7,61} but reports do exist for which mucosal leishmaniasis presented at the same time as LCL,⁶² or for which up to 25% of LCL infections resulted in mucosal leishmaniasis.⁶³ Mucosal leishmaniasis is characterised by the ability of the parasite to metastasise to mucous tissues by lymphatic or haematogenous dissemination. It typically begins with nasal inflammation and stuffiness (ie, mild mucosal leishmaniasis), followed by ulceration of the nasal mucosa and perforation of the septum. In some cases, the lips, cheeks, soft palate, pharynx, or larynx are also involved (ie, severe mucosal leishmaniasis; figure 4). Mucosal leishmaniasis never heals spontaneously, is very difficult to treat, with secondary bacterial infections common, and is potentially fatal.⁶¹

Disease pathogenesis and immunology

The life cycle of leishmania parasites, whether in the sandfly vector or the human host is shown in figure 5. The establishment of the primary leishmania infection and

development of clinical disease depend on parasite, host, and sandfly factors; dose or route of inoculation; and the maintenance of macrophages in an inert, deactivated state.⁶⁶ Pathogenesis follows a complex set of interactions between many factors triggered by the host's innate and acquired immune responses (eg, macrophages, neutrophils, natural killer cells, dendritic cells).⁶⁷ These inflammatory responses mediate disease expression and may result in either symptomless or subclinical infection, self-healing LCL, or chronic leishmaniasis (eg, DCL, mucosal leishmaniasis, leishmaniasis recidivans). Clinical cure ensues when macrophages become activated to a leishmanicidal state. This is mainly mediated by the T-helper cell type 1 (Th1) response, which also prevents recrudescence of latent chronic infection. The Th1 response is characterised by antigen-presenting dendritic cells, responding CD4 and CD8 T cells, and secretion of proinflammatory cytokines (eg, interleukin 12, interferon γ , and tumour necrosis factor α [TNF α]).⁶⁷ Downregulating cytokines (eg, interleukin 4, interleukin 10, interleukin 13, transforming growth factor β [TGF β]) characterise the Th2 response, which deactivates macrophages and prevents excessive production of protective cytokines.⁶⁷ Although the Th2 response probably prevents extensive tissue destruction, it promotes intracellular infection.

To maintain a memory cell response dependent on continuous antigen presentation, lifelong protection against reinfection may involve live parasite persistence (eg, *Leishmania* subgenus *Viannia* DNA is detected in scars and blood of clinically cured patients)^{68,69} and repeated challenges by parasites via new bites of infected sandfly vectors. Recurrence caused by reactivation of persistent infections or trauma may occur,^{70,71} and some patients develop a second cutaneous lesion at a different site after their primary lesion has healed.

Our knowledge of the immune response to leishmania infection mainly stems from studying leishmania infection in various experimental models,⁷² of which the *L major* murine model has been the most dominant, and has been extensively reviewed.^{67,73,74} This response can be summarised as follows: (1) disease resolution is mediated by the cell-mediated response rather than the humoral immune response; (2) the primary activation of T-cell subsets is important for the development of Th1 and Th2 responses and the subsequent course of infection; and (3) there is strong correlation between activation of different T-cell subsets and outcome of disease.

Studies of the cellular immune responses in human beings have mostly been descriptive, because of the difficulties in defining the immunopathological and protective mechanisms in leishmania infections, the necessity to do longitudinal studies, and by the genetic heterogeneity of human and parasite populations. Although epidemiological data from surveys of patients seem to confirm the Th1/Th2 dichotomy shown in experimental animal models, other studies show that the

human immunological response is not exclusively explained in terms of Th1/Th2 subsets.⁷⁵

LCL patients, who present limited and ulcerated skin lesions, represent the so-called healing form of the disease. Their peripheral blood mononuclear cells (PBMCs) proliferate and produce Th1-type cytokines, including interferon γ , when stimulated with leishmanial antigens in vitro.⁷⁶⁻⁷⁸ Their delayed-type hypersensitivity (DTH) response (as measured by the Montenegro skin test) is positive, with Montenegro skin test induration size correlated to lesion size and occasionally to lesion number.^{79,80} By contrast, patients with recurrent infections have a weaker DTH response than patients with subclinical infections,⁸¹ as do patients with relapses when compared with those with reinfections;⁷⁰ their PBMCs produce low concentrations of interferon γ and high concentrations of interleukin 4 when stimulated with leishmanial antigens,⁸² emphasising the role of a Th2-type response in chronic infections. Cytokine profiles may vary with time during the course of infection: although large concentrations of interferon γ are produced on leishmanial antigen presentation in situ (eg, as detected in lesion biopsies),^{76,77,83} during the early phase of infection (<60 days) interferon- γ production may be downregulated by high concentrations of interleukin 10,⁸⁴ which may account for a transient period of high local parasite multiplication. There is no evidence, however, that patients with low initial interferon- γ production are at risk of developing larger lesions or parasite dissemination; in fact, they may have a better response to therapy with pentavalent antimonial drugs.⁷⁷

DCL patients display a predominantly Th2-type cytokine response, in that DCL patients have a complete anergy to leishmanial antigen, with a negative DTH response and lymphocytes non-responsive to leishmanial antigen. DCL patients have low concentrations of interferon γ and interleukin 12, but substantial serum concentrations of interleukin 4, interleukin 5, and TNF α .⁸⁵

Patients with mucosal leishmaniasis show a mixture between Th1 and Th2 cytokine responses (with high levels of interleukin 2, interleukin 4, interleukin 5, and TNF α),^{76,77,86} which could explain non-resolution of disease, because the Th2-type response tends to dominate when both types of responses are activated.⁶⁷ Mucosal leishmaniasis patients tend to have a larger DTH response than LCL patients, with comparatively high serum concentrations of interferon γ and interleukin 2, as well as interleukin 5 and TNF α .^{76,77,84} So far, there are no known immunological markers that may help to identify those LCL patients who are at risk of developing mucosal leishmaniasis. Indeed, studies showing differences in the immune response to different parasite strains or species are scarce. For example, the DTH response to leishmanial antigen is greater in *L braziliensis*-infected patients than in *L panamensis*-infected patients,

even after adjusting for time of evolution and lesion type (ie, LCL or mucosal leishmaniasis).⁸⁷

Only a few studies have reported on parasite-specific cytotoxic T-cell responses.^{88,89} Several reports implicate natural killer cells and CD8 T cells in interferon- γ production and immunity in human cutaneous leishmaniasis.^{90,91} By using granzyme B as a surrogate marker of leishmania-specific cell-mediated cytotoxicity, Boussoffara and colleagues⁹² recently showed that parasite-specific cytotoxic immune responses are developed by individuals living in areas of *L major* transmission, and play a crucial part in resistance to re-infection (Louzir H, unpublished data). Finally, the role of regulatory T cells in cutaneous leishmaniasis has only recently been investigated, with distinct subpopulations of CD4 CD25 regulatory T cells shown to stimulate TGF β 1 production by PBMCs from healthy individuals when incubated with *L guyanensis* parasites.⁹³ Regulatory T cells can also be found in skin lesions of patients with cutaneous leishmaniasis caused by *L braziliensis*, which produce large amounts of interleukin 10 and TGF β 1.⁹⁴ These findings suggest that, like in the mouse model,^{73,74} functional regulatory T cells accumulate at sites of leishmania infection in human beings and possibly contribute to the local control of effector T-cell functions and thereby affect parasite persistence.

Parasite effects and factors

The contribution of the parasite to the clinical cutaneous leishmaniasis pleomorphism has been supported for years at species and intraspecies levels by several studies showing a correlation between specific genotypes and clinical forms (eg, *L infantum* zymodemes causing visceral or cutaneous disease).⁹⁵ Other studies have, however, failed to identify such correlation,⁹⁶ and underscore the complementary role of host and other factors in clinical sequelae.

Several determinants of parasite virulence have been identified experimentally, all of which may help the parasite to evade the host's immune system. These can be classified into three main categories: (1) invasive or evasive determinants (eg, lipophosphoglycans, leishmanolysin, or cysteine proteases), which are crucial for infection, but unable to produce pathology in the host; (2) pathoantigenic determinants (eg, histones, chaperones, or proteasomes), which lead to host immunopathology as the principal cause of clinical symptoms; and (3) protective determinants (to be identified), which seem to lead to clinical cure.⁹⁷ Of note is that most virulence studies are based on a single *Leishmania* sp strain in well-controlled models in vitro or in vivo, which may not be applicable to human pathology.⁹⁸ Indeed, genetic diversity is a major advantage to the parasite, and it seems that *Leishmania* spp differ in their approach to tackle the host immune system.⁹⁹ For example, lipophosphoglycans are a clear virulence factor in *L major*, but not in *L mexicana*,¹⁰⁰ and distinct

L braziliensis isolates induce different paces of chemokine expression patterns.¹⁰¹ In this context, molecular epidemiologists should consider alternative markers to the established neutral markers (eg, isoenzymes or ribosomal DNA internally transcribed spacers) for genotyping natural populations, and focus on the polymorphism of virulence determinants.¹⁰² The informative power of such an approach is shown by the finding that *L peruviana* (reportedly of high pathogenicity but low virulence) differs from *L braziliensis* (reportedly of low pathogenicity and high virulence) by the deletion of half the leishmanolysin genes,¹⁰³ and that leishmanolysin genes are highly polymorphic in leishmania populations, particularly in immunodominant B-cell and T-cell epitopes.¹⁰⁴ PCR-based assays targeting leishmanolysin and other virulence genes are becoming available for such a molecular epidemiology approach,^{105,106} but should be complemented by studies at transcriptomic and proteomic levels.

Host effects and factors

Susceptibility to cutaneous leishmaniasis can be greatly influenced by malnutrition,¹⁰⁷ immunosuppression (eg, HIV),¹² and host genetic background.¹⁰⁸ Comparative studies focusing on different ethnic groups (eg, mucosal leishmaniasis caused by *L braziliensis* in Bolivia),¹⁰⁹ natives and migrants (eg, LCL caused by *L major* in Saudi Arabia),¹¹⁰ or by familial clustering studies (eg, mucosal leishmaniasis caused by *L braziliensis* in Brazil),²⁶ have shown that human genetic components control cutaneous leishmania susceptibility and resistance. Identification of candidate genes or regions involved in the genetic control of leishmaniasis has been made possible by a mouse-to-human approach, whereby susceptibility or resistance genes have been identified in murine models,¹¹¹ and refined by the knowledge of the human immune response to leishmaniasis and genetic studies of other intramacrophage pathogens. Thus, studies in human beings indicate a role of HLA molecules in LCL and mucosal leishmaniasis,¹¹² and the role of TNF α in developing mucosal leishmaniasis.¹¹³ However, a strong imbalance exists between the number of experimental analyses in mice and studies in a natural human context. In consideration of the diversity in the above-mentioned parasite approach of the host, whether host genetic determinants of leishmaniasis will be the same for different *Leishmania* spp remains to be established.

Sandfly vector effects and factors

In the past decade, it has become clear that sandfly saliva is crucial in the establishment of infection and disease pathogenesis.¹¹⁴ Sandfly saliva is vasodilatory and enhances erythema (caused by the maxadilan peptide in *Lutzomyia longipalpis*); increases parasite burden, lesion size, and persistence after co-inoculation with *L major*, *L amazonensis*, and *L braziliensis*; and intraspecific variation in saliva

components determines clinical outcome after *L infantum* infection. The immunological basis for these findings is not fully understood, but it seems that saliva proteins can shift the adaptive immune response from a Th1 to a Th2 cell-mediated immune response (eg, by increasing the production of interleukin 4 and interleukin 6, or by inhibiting TNF α , interferon γ , interleukin 12, and nitric oxide production). Furthermore, experimental or natural pre-exposure to sandfly saliva cancels any enhancing effect from subsequent co-inoculation of saliva with *L major*, reducing parasite load and lesion size, as well as increasing the DTH response and reducing interleukin-4 production.¹¹⁵ This protective effect seems to be mediated by anti-saliva antibodies produced after saliva exposure. If this phenomenon exists under natural conditions, it may explain why cutaneous and mucosal leishmaniasis host susceptibility declines with age, as observed in people in cutaneous leishmaniasis-endemic areas.⁷

Diagnosis and treatment

Diagnosis

The broad clinical spectrum of cutaneous leishmaniasis makes diagnosis of present and past cases difficult. Differential diagnosis is important because diseases of other causes but with a similar clinical spectrum to leishmaniasis (eg, leprosy, skin cancers, tuberculosis, cutaneous mycoses) are common in leishmaniasis-endemic areas.¹⁴

Parasitological diagnosis remains the gold standard in cutaneous leishmaniasis diagnosis, because of its high specificity. It includes microscopic examination of Giemsa-stained biopsy smears or aspirates, histopathological examination of fixed lesion biopsies, or culture of biopsy triturates or aspirates.¹⁴ Microscopic examination is probably the most common diagnostic approach used, because more sophisticated techniques are expensive and rarely available at primary, secondary, and tertiary health-care levels in endemic areas. Culture methods are probably the most informative, allowing species identification and characterisation, but require a wealth of technical expertise, and are time-consuming and expensive. The sensitivity of these techniques, however, tends to be low and can be highly variable, depending on parasite number and dispersion in biopsy samples, technical expertise, and culture media. Molecular parasitological diagnosis for cutaneous leishmaniasis was developed extensively during the past decade, and has been recently reviewed.¹¹⁶ It is essentially done by PCR-based methods and is particularly useful in cases with low parasite load (eg, mucosal leishmaniasis); potentially, therapy of cutaneous leishmaniasis patients could also be monitored. Whereas reported specificity is 100%, sensitivity is improved by 20–30% in LCL and 55–70% in mucosal leishmaniasis when compared with conventional parasitological diagnosis. Although there has been substantial effort in applying molecular diagnostics in the field (eg, successful detection of

parasite DNA in blood or tissue smears; development of rapid PCR oligochromatography), its widespread use is still hampered by the requirement of substantial laboratory infrastructure, technical expertise, and cost.¹¹⁶ Until these hurdles can be overcome, molecular diagnosis will be limited to well-established reference laboratories, or travel medicine clinics.

Serological diagnosis is rarely used in cutaneous leishmaniasis diagnosis because of variable sensitivity and specificity.¹¹⁷ The Montenegro skin test is occasionally used in diagnosis of cutaneous disease (eg, in epidemiological surveys), because of its simple use and high sensitivity and specificity;¹¹⁸ however, it fails to distinguish between past and present infections.

Treatment

Although non-fatal, cutaneous leishmaniasis is treated to accelerate cure to reduce scarring, especially in cosmetic sites, and to prevent parasite dissemination (ie, mucosal leishmaniasis) or relapse. Treatment is commonly given for persistent (>6 months duration), multiple, or large lesions, and for lesions located on joints or on the face. In most leishmaniasis-endemic countries, official Ministry of Health policy is to provide free treatment to all patients. This is often not feasible in practice, because drugs may be in limited supply, particularly in the mostly rural areas where the disease occurs. Thus, self-help patient associations or non-governmental organisations may facilitate diagnosis and treatment of patients (eg, Bolivia,¹¹⁹ Peru,¹⁷ and Afghanistan⁶).

Except for the immunotherapy policy in Venezuela,¹²⁰ and the pentamidine treatment policies in French Guyana and Suriname,^{121,122} WHO recommends treating cutaneous leishmaniasis with pentavalent antimonial drugs (ie, sodium stibogluconate or meglumine antimonate) at 20 mg/kg per day for 20–28 consecutive days. Barring one exception,¹²³ this regimen has been shown to be more efficient than a daily dose of 10 mg/kg, 13 mg/kg, or 15 mg/kg in treating LCL.^{124,125}

The main problems in treating cutaneous leishmaniasis are that clinical diagnosis is difficult in the absence of microscopy at the basic health-care level, and pentavalent antimonial drugs can have serious, although usually reversible, side-effects (eg, musculoskeletal pains, renal failure, hepatotoxicity, and cardiotoxicity),^{124,125} and are of variable efficacy against mucosal leishmaniasis.¹²⁶ Drugs and medical attention because of the side-effects make treatment expensive, and reports on patients non-responsive to the drugs either because of drug-resistant parasite strains¹³ (although a recent study has questioned the definition of true parasite resistance)¹²⁷ or to immunosuppression (eg, caused by HIV)¹² are increasing. Moreover, the invasiveness of the standard treatment protocol (ie, a lengthy course of intramuscular or intravenous injections) means that many patients fail to complete their full course of treatment.¹²⁸ Hence, to reduce systemic toxic effects, economic cost, and poor

treatment compliance, most research in the past decade has focused on the development of alternative dosage schedules, modes of delivery (ie, parenteral vs local, or topical vs oral), or treatments.¹²⁵

Recommended and alternative treatment regimens are shown in table 2, categorised by treatment modality and leishmania cause. We reviewed currently available data and conclude that for cutaneous leishmaniasis, pentavalent antimony, given parenterally or intralesionally, remains the first-line treatment approach. Alternative treatment regimens include amphotericin B, especially for mucosal leishmaniasis, and pentamidine. Several studies have shown the efficacy of miltefosine and thermotherapy, which should also be considered as alternative treatments, depending on leishmania cause and clinical manifestation. For other treatment regimens, not enough consistent data exist in our view to show their efficacy against cutaneous leishmaniasis, and these are not recommended for use in routine clinical practice.

A few groups of studies are worth mentioning because of their potential relevance for antileishmanial

treatment policy. First, several studies on patients infected with *L panamensis* in Colombia,¹³⁰ *L braziliensis* in Guatemala,¹³¹ and *L tropica* in the USA,¹³² have shown no substantial difference when reducing the treatment duration with 20 mg/kg per day pentavalent antimony from 20 days to 10 days. Extending the treatment from 28 days to 40 days does not lead to an increase in clinical cure in patients with mucosal leishmaniasis, with proportions being the same for both patient groups.¹³⁴ Thus, there seems to be room to reduce treatment time when using antimony, particularly if there is no increased risk of secondary leishmanial diseases (eg, mucosal leishmaniasis or leishmaniasis recidivans), the advantage being a reduction in systemic toxicity and treatment cost.

Second, numerous studies have shown that intralésional pentavalent antimony administration (figure 6) can be very effective in treating patients with LCL caused by *L major*,¹³⁴ *L tropica*,¹²⁸ *L braziliensis*,¹⁵⁵ or *L panamensis*.¹⁵⁶ The advantages of this approach are that a higher drug concentration targets the site of infection, reducing

	Application	Pathology	Clinical efficacy against <i>Leishmania</i> spp	Comments	References
First-line treatment					
Pentavalent antimony					
20 mg/kg daily for 20 days	Parenteral, intramuscularly or intravenously	LCL	All species: 36–96%	Toxic side-effects; not recommended for pregnant women; shorter course can be effective	53, 124, 129–132
10–15 mg/kg daily for 20–30 days	Parenteral, intramuscularly	LCL	Several species: >75%	Toxic side-effects; not recommended for pregnant women	124
20 mg/kg daily for 28 days	Parenteral, intramuscularly or intravenously	ML	<i>L braziliensis</i> , <i>L panamensis</i> , <i>L guyanensis</i> : 10–75%	Toxic side-effects; not recommended for pregnant women; longer courses are not necessarily more effective	126, 133
Protocol variable*	Local, intralésionally	LCL	<i>L major</i> : 73%; <i>L tropica</i> : 75%	No systemic toxic side-effects; substantially increases patient compliance; substantial reduction in pentavalent antimony used and cost of therapy	128, 134
Alternative treatments					
Amphotericin B					
1 mg/kg on alternate days or daily	Parenteral	LCL, ML	<i>L braziliensis</i> : unknown	Toxic side-effects, given for antimony-unresponsive patients; case studies only	124
Pentamidine isetonate					
2 mg/kg on alternate days for seven doses	Parenteral	LCL	<i>L panamensis</i> : 95%; <i>L braziliensis</i> : 35%	Toxic side-effects, especially at higher doses; first-line therapy against <i>L guyanensis</i> in French Guyana and Suriname	52, 121, 122, 135
4 mg/kg on alternate days for four to eight doses	Parenteral	LCL	<i>L braziliensis</i> : 71%	Toxic side-effects, especially at higher doses	136
Miltefosine					
2.5 mg/kg for 28 days	Oral	LCL	<i>L panamensis</i> : 91%; <i>L braziliensis</i> or <i>L mexicana</i> : 53%	Limited toxic side-effects; teratogenicity in animals, contraindicated for pregnant women or women of childbearing age; registered for cutaneous leishmaniasis treatment in Colombia in 2005; also seems effective for treatment of ML	45, 137
Thermotherapy†					
One application at 50°C for 30 s	Topical	LCL	<i>L tropica</i> : 69%	No systemic toxic side-effects; increases patient compliance; use depends on lesion size and number; hardware expensive; Ministry of Public Health approval as alternative cutaneous leishmaniasis treatment in Afghanistan	128
Three applications at 50°C for 30 s at weekly intervals	Topical	LCL	<i>L braziliensis</i> or <i>L mexicana</i> : 73%	No systemic treatment side-effects; use depends on lesion size and number	48

(Continues on next page)

systemic toxic effects, improving healing time, and reducing cost (eg, in Afghanistan, the cost of successfully treating cutaneous leishmaniasis can vary substantially, depending on whether a patient is treated intralesionally or intramuscularly).¹⁵⁷ The drawbacks are that there is no set protocol (ie, the drug amount used is dependent on lesion number, size, and location), and treatment administration requires substantial technical expertise.²⁰

Third, several less toxic formulations of amphotericin B have been developed (eg, AmBisome, Amphocil, and Abelcet). These have been tested *in vitro* and *in vivo*,¹⁵⁸ but unlike for visceral leishmaniasis,²⁻⁴ their cost has restricted their use in cutaneous leishmaniasis treatment to a handful of (successful) case studies.^{159,160}

Fourth, several studies have shown the efficacy of oral (eg, ketoconazole, fluconazole, miltefosine) or topical

(eg, paromomycin cream, thermotherapy) treatment regimens (table 2). Whereas certain regimens have been pursued more vigorously and consistently (eg, miltefosine), others have been less so, probably as a result of the high costs of the branded drug (eg, ketoconazole), cream (eg, paromomycin), or hardware (eg, radiofrequency generator used in thermotherapy). However, some of these treatment alternatives may substantially reduce treatment duration and non-compliance of patients, and, hence, ultimately prove cost-effective.

Finally, there is increasing evidence that the treatment response of patients with cutaneous leishmaniasis depends on the infecting *Leishmania* spp. For example, miltefosine was shown to have high efficacy in treating *L panamensis* patients in Colombia, but had a reduced

(Continued from previous page)

Other treatments

Paromomycin						
14 mg/kg daily for 20 days	Parenteral	LCL	<i>L braziliensis</i> or <i>L mexicana</i> : 59%	Toxic side-effects; limited efficacy against <i>L panamensis</i> and in ML	124, 125, 138	
Twice daily application for 10–20 days	Topical cream (15%) [†]	LCL	<i>L major</i> : 31–74%	No systemic toxic side-effects	39, 43, 44, 139	
Twice daily application for 14–21 days	Topical cream (15%) [†]	LCL	<i>L braziliensis</i> or <i>L mexicana</i> : 68–91%	No systemic toxic side-effects	140, 141	
Twice daily application for 20–30 days	Topical cream (15%) [†]	LCL	<i>L major</i> : 17–68%	No systemic toxic side-effects	142, 143	
Twice daily application for 30 days	Topical cream (15%) [†]	LCL	<i>L panamensis</i> : 70–79%	No systemic toxic side-effects	144	
Thrice daily application for 28 days	Topical cream (15%) [†]	LCL	<i>L infantum</i> : 8%	No systemic toxic side-effects	46	
Allopurinol						
20 mg/kg per day (~1200 mg) for 28 days	Oral	LCL	<i>L panamensis</i> or <i>L braziliensis</i> : 33%	Unconfirmed efficacy when used in combination with pentavalent antimony	51, 124, 125	
1500 mg daily for 28 days	Oral	LCL	<i>L panamensis</i> : 41%	..	53	
Dapsone						
200 mg daily for 42 days	Oral	LCL	<i>L tropica</i> (unconfirmed): 82%	Seems ineffective against <i>L panamensis</i>	125, 145	
Fluconazole						
200 mg daily for 42 days	Oral	LCL	<i>L major</i> : 79%	Seems ineffective for other species; expensive therapy	41, 124, 125	
Itraconazole						
200 mg twice daily for 21–28 days	Oral	LCL	<i>L major</i> : 59%; <i>L tropica</i> : 70%	..	38, 42, 146	
400 mg for 28 days	Oral	LCL	<i>L panamensis</i> : 35%	..	53	
Ketoconazole						
600 mg daily for 28–30 days	Oral	LCL	<i>L braziliensis</i> : 30%; <i>L mexicana</i> : 89%; <i>L panamensis</i> : 76%; <i>L major</i> : 89%	..	47, 147, 148	
For 21 days	Topical (cream)	LCL	<i>L major</i> : 29%	No systemic toxic side-effects	40	
Zinc						
2.5–10 mg daily	Oral	LCL	<i>L major</i> : 84–97%	No systemic toxic side-effects	149	
Cryotherapy						
Interferon γ (protocol variable)	Local, one application	LCL	<i>L major</i> : 57%	No systemic toxic side-effects	150	
Interferon γ (protocol variable)	Local, intralesionally	LCL	<i>L tropica</i> : 3%	No systemic toxic side-effects	151	
Zinc sulphate solution (2%; protocol variable)	Local or topical, intralesionally	LCL	<i>L major</i> : 11–95%	No systemic toxic side-effects	152, 153	

Types of regimen: first-line treatment regimens; alternative treatment regimens that could be used should patients fail their first treatment course; and other treatment regimens that have been tested but for which comprehensive efficacy data have yet to be accumulated. With the exception of the studies assessing treatment options for mucosal leishmaniasis (ML), we only included clinical trials that: (1) assessed monotherapies; (2) had a placebo or pentavalent antimony control group administered intramuscularly, intravenously, or intralesionally; and (3) included treatment cohorts with a minimum sample size of ten. Also, reviewed studies had to clearly state efficacy endpoints and number of patients cured or failed according to these defined efficacy endpoints. All systemic treatments have moderate to serious side-effects and have been comprehensively reviewed by Berman²²⁴ and Croft and Yardley.²²⁵ See also Murray et al² for details on antileishmanial therapies. ..=not reported. LCL=localised cutaneous leishmaniasis. *Dependent on number and size of lesions (eg, patients in Afghanistan with more than five lesions tend to be treated intramuscularly rather than intralesionally). Pentavalent antimony is either available in branded (sodium stibogluconate, Pentostam; or meglumine antimonate, Glucantime) or generic form. [†]Thermotherapy applied by localised radiofrequency waves, protocol dependent on number and size of lesions.²²² [‡]Can contain urea (10%) or methylbenzethonium chloride (12%).

Table 2: Efficacy range of available treatment regimens for cutaneous leishmaniases caused by the main *Leishmania* spp



Figure 6: Treatment, prevention, and control of the cutaneous leishmaniasis

Although there has been substantial progress in assessing new alternatives for leishmaniasis treatment, the mainstay of antileishmanial treatment is pentavalent antimonial drugs given either intramuscularly, intravenously, or intralesionally (A: intraliesional sodium stibogluconate administration in Kabul, Afghanistan). Prevention and control of cutaneous leishmaniasis has mostly been restricted to pilot and research studies (B: active case detection during an epidemiological survey in Huánuco, Peru) with few strategies having been scaled up to an operational level (C: community health education in Jalalabad, Afghanistan; D: insecticide-treated bednet for leishmaniasis prevention and control in Kabul, Afghanistan).

efficacy for patients infected with *L. braziliensis* in Guatemala,⁴⁵ with the possibility for a species-specific tolerance to miltefosine supported by susceptibility data in vitro.¹⁶¹

Despite the numerous clinical trials that have tested different treatment approaches for cutaneous leishmaniasis, comparisons between studies are problematic. First, cutaneous leishmaniasis lesions can self cure. Failure to include either negative (placebo) or positive (recommended standard treatment, such as pentavalent antimony) controls in the studies makes the interpretation of an effect of different drugs, doses, or schedules impossible, especially if small numbers of patients are used to assess treatment response. Second, infecting parasite species and strains clearly vary in their sensitivities to drugs, and cure rates of cutaneous leishmaniasis patients with moderate or severe disease (LCL vs mucosal leishmaniasis) are very different; infecting parasites should be characterised if financially and logistically feasible. Healing rates also depend on host factors, such as localisation and chronicity of lesions, underlying illness or concomitant infection, and acquired resistance to leishmania infection; thus, such data should

be collected. Third, studies vary in experimental protocol (eg, study design, duration of follow-up) and in particular in their definition of clinical cure. For example, clinical cure may be defined as, “when lesions have more than 80% re-epithelialised by the first follow-up at 1.5 months”,⁵³ or as, “complete re-epithelialisation of all lesions at the end of treatment and no reactivation or mucosal involvement during follow-up”.¹³⁰ Standardised endpoints should be established.

Disease control

Vector and reservoir control

Because the strategies available are expensive and labour intensive, and because cutaneous leishmaniasis is a non-fatal disease, prevention and control strategies have mainly focused on treatment of the human disease, rather than on the elimination of reservoirs or reduction of human–vector contact.¹⁶² Hence, most approaches have been limited to pilot research studies and only a few have been brought up to operational scale.¹⁶³

Sandflies are highly susceptible to insecticides. Although they possess the necessary biochemical mechanisms,¹⁶⁴ reports of resistance are few.¹⁶² Anecdotal evidence from Peruvian and Iranian malaria eradication campaigns in the 1950s suggested that residual spraying of houses is effective against endophilic and endophagic sandfly vectors, which was subsequently shown in controlled studies.^{162,165} Measures involving the participation of the at-risk human population focus on personal protection from cutaneous leishmaniasis (figure 6), including insecticide-impregnated materials (eg, bednets,^{162,163,165–168} curtains,^{167,169} clothes,¹⁶² or bed-sheets)¹⁶⁵ and repellents,^{162,170} which may offer an alternative in places with poor health-service infrastructure and peridomestic leishmania transmission. Several studies have shown that pyrethroid-treated bednets provide 50–65% protection against infection or disease.^{162,163,165–168} However, similar to house spraying, the long-term feasibility of insecticide-treated materials is debatable, because of logistical constraints (eg, re-impregnation of materials) and the intervention's economic cost. Opportunities for cost-effective scale-up of cutaneous leishmaniasis prevention and control through insecticide-treated materials are the recent development of long-lasting insecticide-treated nets (ie, WHO-approved Olyset [Sumitomo Chemical, Tokyo, Japan] and PermaNet [Vestergaard Frandsen, Lausanne, Switzerland] nets, which are already extensively used in malaria control) or long-lasting insecticide formulations (ie, K-O TAB, Bayer Environmental Science, Monheim am Rhein, Germany). In forested environments (ie, in most endemic areas of South and Central America) health authorities are usually limited to treating human cutaneous leishmaniasis cases. Although prevention and control strategies (eg, environmental management, spraying of sandfly resting sites) have been explored,¹⁶² targeting the sandfly vector effectively in these habitats is difficult.

We know of only one reported example of reservoir control as a cutaneous leishmaniasis prevention and control strategy, in which zoonotic LCL caused by *L major* was controlled by destroying burrows of the rodent LCL reservoir.³³ In endemic areas where dogs are domestic reservoirs of cutaneous leishmaniasis,¹⁶ deltamethrin-impregnated dog collars could be an effective and feasible strategy, especially if these areas are sympatric for visceral leishmaniasis or Chagas disease.^{171,172} To be sustainable in the long-term, cutaneous leishmaniasis control strategies will have to be integrated into a strategy addressing other vector-borne diseases (eg, malaria or Chagas disease).

Vaccines

The rationale for vaccine development is provided by the evidence that most individuals that had leishmaniasis or symptomless infection are resistant to subsequent clinical infections. As outlined in recent reviews,^{173–175} substantial effort has been spent in developing a leishmania vaccine, an effort that has so far remained fruitless. The only proven cutaneous leishmaniasis vaccine (practised for centuries) is the deliberate inoculation of virulent leishmania parasites, so-called leishmanisation.¹⁷⁶ However, for several basic and logistic problems (eg, difficulties in maintaining parasite virulence, risk of unacceptable lesions in some recipients), leishmanisation is not currently recommended by WHO. Its use is restricted to a few countries (eg, Uzbekistan), notably as an evaluation method of new leishmaniasis vaccines. With the support of WHO's Research and Training in Tropical Diseases programme, several vaccines, based on killed parasites, have been developed and assessed for their immunogenicity and efficacy in South and Central America, Sudan, and Iran.^{173–175} In all these studies, the Montenegro skin test, PBMC proliferation, or interferon- γ production were used as indicators of Th1 response for the selection of naive individuals and as a correlate for protection. Although tested vaccines were safe and immunogenic (ie, in terms of leishmanin skin test conversion or increase of specific interferon- γ production by PBMC), significant, long-lasting protection could not be shown. It seems that in leishmania vaccine studies, the specific DTH reaction induced by vaccination is not predictive of protection. These observations contradict the protective effect of leishmanin skin test reactivity in naturally infected individuals,^{79,177} and emphasise the complexity of *Leishmania* spp susceptibility and resistance mechanisms.

New approaches are now being investigated in the experimental leishmaniasis mouse models, with several *Leishmania* spp and sandfly saliva proteins having been identified as candidate vaccines.^{178–180} It is hoped that the recent completion of the genome sequence for *L major*,¹⁸¹ and soon *Lu longipalpis*,¹⁸² will yield novel strategies for vaccine development that take advantage of recent progress in molecular biology, immunology, and post-genomics.

Panel: Priorities for research and public-health policy

Research

General approaches

- Standardise protocols of experimental, clinical, and epidemiological studies, so that comparisons between studies can be made (eg, clinical trials must include placebo or antimony controls and should have the same clinical endpoints)

Diagnosis, pathology, and immunology

- Investigate relevance and cost-effectiveness of including species typing in the routine diagnosis in endemic countries with sympatric species
- Understand how innate immune system shapes adaptive antileishmanial immunity

Treatment and vaccines

- Assess the clinical efficacy of antileishmanial drugs that have recently become available in their generic forms (eg, fluconazole)
- Assess the effect of true parasite drug resistance on treatment efficacy

Epidemiology, prevention, and control

- Reassess the global burden of cutaneous leishmaniasis because current figures are based on poor notification data and do not include social impact (disability) caused by scarring of lesions
- Investigate associations between disease distribution, sociodemographic, and environmental risk factors at both small and larger levels so that rational prevention and control strategies can be developed
- Support field studies to investigate sandfly ecology, because they are fundamental in developing putative prevention and control strategies

Public-health policy

- Harmonise leishmaniasis notification, prevention, and control guidelines in endemic countries to allow better estimates of burden of disease
- Expand use of generic sodium stibogluconate, because it has shown to be as effective as branded antimony for treating cutaneous leishmaniasis and at a fraction of the economic cost
- Expand use of local, oral, and topical antileishmanial therapies, especially in areas where patient compliance and drug supply are problematic
- Develop cost-effective prevention and control strategies, especially if these can be integrated into programmes to control other diseases (eg, malaria or Chagas disease)

Conclusions

The leishmaniasis are a complex group of diseases and although we know much more than we did a decade ago, we are no nearer to the prevention or control of this neglected disease, which mainly affects the world's poorest populations.¹⁸³ To do so requires professional and financial commitment, focusing on key research and policy areas (panel). Over the past decade, several reviews and reports have identified priorities in research and public-health policy with regard to cutaneous leishmaniasis. These have ranged from increasing efforts in vaccine research and development of antileishmanial combination therapies to the encouragement of multidisciplinary studies to consider the tremendous diversity of natural leishmania populations in protocol design and to maximise project output. Although some of these priorities are still relevant today, we believe that others should be included to bring the field significantly forward.

Management of patients can be substantially improved, by developing better approaches to case detection and treatment. Better case detection and epidemiological

Search strategy and selection criteria

A comprehensive literature search of medical databases (Medline and Cochrane library) and non-medical search engines was done using several keywords: "leishmaniasis", "leishmaniosis", "leishmania", "cutaneous", "mucosal", "mucocutaneous", and "diffuse". We paid particular attention to articles published in the non-English literature, as these have had little exposure in previous reviews. If appropriate, we contributed our personal knowledge on the subject. Our review focused on studies undertaken or published in the past 10 years.

surveillance are also required to better quantify the disease burden of cutaneous leishmaniasis. Several epidemiological aspects deserve further study. The relative association and contribution of environmental factors, parasite and vector species, exposure and susceptibility factors generating predisposition to disease, and distributions of infection and disease are poorly understood, and need to be elucidated for the design of any control strategy. If, for example, susceptibility factors are dominant, then comprehensive research on chemotherapy and vaccines should focus on how best to protect susceptible individuals; if exposure factors are more important, then the identification of risk factors would help to guide the design of prevention strategies.

Conflicts of interest

RR has been a consultant to Thermosurgery Technologies Inc, received conference travel funds from Zentaris and Intervet, was provided free dog collars from Intervet to carry out field trials in Brazil, and was provided free miltefosine by Zentaris to carry out a clinical trial on its efficacy in Afghanistan. All other authors declare that they have no conflicts of interest.

Acknowledgments

We are grateful to Rupert Quinell for valuable comments on the manuscript and various colleagues who contributed to helpful discussions and provided photographs for figure 3A (Ray Wilson) and figure 6C (Mark Rowland); we also thank three anonymous reviewers for constructive comments on the submitted manuscript. Our work is and has been supported by grants from the Albert Berman Foundation, Afghan Research Evaluation Unit, Belgian Agency for Cooperation and Development, Conselho Nacional de Pesquisa, European Union (European Commission [EC], EC INCO Programme, EC Humanitarian Office), Gesellschaft für Technische Zusammenarbeit, Hilda Leveen Family Fund, Office of the United Nations High Commissioner for Refugees, Sir Halley Stewart Trust, United Nations Aid Mission to Afghanistan, Wellcome Trust, and WHO. SB is supported by a Wellcome Trust Advanced Training Fellowship (073656). The opinions expressed in this Review are those of the authors and may not reflect the position of their employing organisations nor of their work's sources of funding.

References

- WHO. The world health report 2004. Changing history. Geneva: WHO, 2004. <http://www.who.int/whr/2004/en/index.html> (accessed June 12, 2007).
- Murray HW, Berman JD, Davies CR, Saravia NG. Advances in leishmaniasis. *Lancet* 2005; **366**: 1561–77.
- Olliaro PL, Guerin PJ, Gerstl S, Haaskjold AA, Rottingen JA, Sundar S. Treatment options for visceral leishmaniasis: a systematic review of clinical studies done in India, 1980–2004. *Lancet Infect Dis* 2005; **5**: 763–74.
- Guerin PJ, Olliaro P, Sundar S, et al. Visceral leishmaniasis: current status of control, diagnosis, and treatment, and a proposed research and development agenda. *Lancet Infect Dis* 2002; **2**: 494–501.
- Desjeux P. Leishmaniasis. *Nat Rev Microbiol* 2004; **2**: 692.
- Reithinger R, Mohsen M, Aadil K, Sidiqi M, Erasmus P, Coleman PG. Anthroponotic cutaneous leishmaniasis, Kabul, Afghanistan. *Emerg Infect Dis* 2003; **9**: 727–29.
- Davies CR, Reithinger R, Campbell-Lendrum D, Feliciangeli D, Borges R, Rodriguez N. The epidemiology and control of leishmaniasis in Andean countries. *Cad Saúde Publica* 2000; **16**: 925–50.
- Brandão-Filho SP, Campbell-Lendrum D, Brito ME, Shaw JJ, Davies CR. Epidemiological surveys confirm an increasing burden of cutaneous leishmaniasis in north-east Brazil. *Trans R Soc Trop Med Hyg* 1999; **93**: 488–94.
- King RJ, Campbell-Lendrum DH, Davies CR. Predicting geographic variation in cutaneous leishmaniasis, Colombia. *Emerg Infect Dis* 2004; **10**: 598–607.
- Tayeh A, Jalouk L, Cairncross S. Twenty years of cutaneous leishmaniasis in Aleppo, Syria. *Trans R Soc Trop Med Hyg* 1997; **91**: 657–59.
- Yadon ZE, Quigley MA, Davies CR, Rodrigues LC, Segura EL. Assessment of leishmaniasis notification system in Santiago del Estero, Argentina, 1990–1993. *Am J Trop Med Hyg* 2001; **65**: 27–30.
- Molina R, Gradoni L, Alvar J. HIV and the transmission of *Leishmania*. *Ann Trop Med Parasitol* 2003; **97** (suppl 1): 29–45.
- Croft SL, Sundar S, Fairlamb AH. Drug resistance in leishmaniasis. *Clin Microbiol Rev* 2006; **19**: 111–26.
- Escobar MA, Martinez F, Scott Smith D, Palma GI. American cutaneous and mucocutaneous leishmaniasis (tegumentary): a diagnostic challenge. *Trop Doct* 1992; **22**: 69–78.
- Desjeux P. The increase in risk factors for leishmaniasis worldwide. *Trans R Soc Trop Med Hyg* 2001; **95**: 239–43.
- Reithinger R, Espinoza JC, Davies CR. The transmission dynamics of canine American cutaneous leishmaniasis in Huánuco, Peru. *Am J Trop Med Hyg* 2003; **69**: 473–80.
- Guthmann JP, Calmet J, Rosales E, Cruz M, Chang J, Dedet JP. Patients' associations and the control of leishmaniasis in Peru. *Bull World Health Organ* 1997; **75**: 39–44.
- Massoom M, Marri SM. Current status of leishmaniasis in Pakistan. In: Bhaduri AN, Basu MK, Sen AK, Kumar S, eds. Current trends in leishmania research. New Delhi: Council of Scientific and Industrial Research, 1993: 231–36.
- Weina PJ, Neafie RC, Wortmann G, Polhemus M, Aronson NE. Old world leishmaniasis: an emerging infection among deployed US military and civilian workers. *Clin Infect Dis* 2004; **39**: 1674–80.
- Blum J, Desjeux P, Schwartz E, Beck B, Hatz C. Treatment of cutaneous leishmaniasis among travellers. *J Antimicrob Chemother* 2004; **53**: 158–66.
- Chiheb S, Guessous-Idrissi N, Hamdani A, et al. *Leishmania tropica* cutaneous leishmaniasis in an emerging focus in North Morocco: new clinical forms. *Ann Dermatol Venerol* 1999; **126**: 419–22.
- Jacobson RL, Eisenberger CL, Svobodova M, et al. Outbreak of cutaneous leishmaniasis in northern Israel. *J Infect Dis* 2003; **188**: 1065–73.
- Motazedian H, Noamanpoor B, Ardehali S. Characterization of *Leishmania* parasites isolated from provinces of the Islamic Republic of Iran. *East Mediterr Health J* 2002; **8**: 338–44.
- Brooker S, Mohammed N, Adil K, et al. Leishmaniasis in refugee and local Pakistani populations. *Emerg Infect Dis* 2004; **10**: 1681–84.
- Killick-Kendrick R. The biology and control of phlebotomine sandflies. *Clin Dermatol* 1999; **17**: 279–89.
- Castellucci L, Cheng LH, Araujo C, et al. Familial aggregation of mucosal leishmaniasis in northeast Brazil. *Am J Trop Med Hyg* 2005; **73**: 69–73.
- Yadon ZE, Rodrigues LC, Davies CR, Quigley MA. Indoor and peridomestic transmission of American cutaneous leishmaniasis in northwestern Argentina: a retrospective case-control study. *Am J Trop Med Hyg* 2003; **68**: 519–26.
- Miranda C, Marques CA, Massa JL. Satellite remote sensing as a tool for the analysis of the occurrence of American cutaneous leishmaniasis in Brazil. *Rev Saúde Publica* 1998; **32**: 455–63.

- 29 Chaves LF, Pascual M. Climate cycles and forecasts of cutaneous leishmaniasis, a nonstationary vector-borne disease. *PLoS Med* 2006; **3**: 1320–28.
- 30 Herwaldt BL. Laboratory-acquired parasitic infections from accidental exposures. *Clin Microbiol Rev* 2001; **14**: 659–88.
- 31 Alexander B, Agudelo LA, Navarro JF, et al. Relationship between coffee cultivation in Colombia and exposure to *Leishmania*. *Trans R Soc Trop Med Hyg* (in press).
- 32 Campbell-Lendrum DH, Brandao-Filho SP, Pinto MC, Vexenat A, Ready PD, Davies CR. Domesticity of *Lutzomyia whitmani* (Diptera: Psychodidae) populations: field experiments indicate behavioural differences. *Bull Entomol Res* 2000; **90**: 41–48.
- 33 Ashford RW. Leishmaniasis reservoirs and their significance in control. *Clin Dermatol* 1996; **14**: 523–32.
- 34 Ashford RW. What it takes to be a reservoir host. *Belg J Zool* 1997; **127** (suppl 1): 85–90.
- 35 Peters W, Killick-Kendrick R, eds. The leishmaniasis in biology and medicine. Clinical aspects and control, vol 2. London: Academic Press, 1987.
- 36 Turetz ML, Machado PR, Ko AI, et al. Disseminated leishmaniasis: a new and emerging form of leishmaniasis observed in northeastern Brazil. *J Infect Dis* 2002; **186**: 1829–34.
- 37 Barral A, Guerreiro J, Bomfim G, Correia D, Barral-Netto M, Carvalho EM. Lymphadenopathy as the first sign of human cutaneous infection by *Leishmania braziliensis*. *Am J Trop Med Hyg* 1995; **53**: 256–59.
- 38 Nassiri-Kashani M, Firooz A, Khamesipour A, et al. A randomized, double-blind, placebo-controlled clinical trial of itraconazole in the treatment of cutaneous leishmaniasis. *J Eur Acad Dermatol Venereol* 2005; **19**: 80–83.
- 39 Asilian A, Jalayer T, Whitworth JA, Ghasemi RL, Nilforooshzadeh M, Olliaro P. A randomized, placebo-controlled trial of a two-week regimen of aminosidine (paromomycin) ointment for treatment of cutaneous leishmaniasis in Iran. *Am J Trop Med Hyg* 1995; **53**: 648–51.
- 40 Momeni AZ, Aminjavaheri M, Omidghaemi MR. Treatment of cutaneous leishmaniasis with ketoconazole cream. *J Dermatolog Treat* 2003; **14**: 26–29.
- 41 Alrajhi AA, Ibrahim EA, De Vol EB, Khairat M, Faris RM, Maguire JH. Fluconazole for the treatment of cutaneous leishmaniasis caused by *Leishmania major*. *N Engl J Med* 2002; **346**: 891–95.
- 42 Momeni AZ, Jalayer T, Emamjomeh M, et al. Treatment of cutaneous leishmaniasis with itraconazole. Randomized double-blind study. *Arch Dermatol* 1996; **132**: 784–86.
- 43 Ben Salah A, Zakraoui H, Zaatour A, et al. A randomized, placebo-controlled trial in Tunisia treating cutaneous leishmaniasis with paromomycin ointment. *Am J Trop Med Hyg* 1995; **53**: 162–66.
- 44 el-On J, Halevy S, Grunwald MH, Weinrauch L. Topical treatment of Old World cutaneous leishmaniasis caused by *Leishmania major*: a double-blind control study. *J Am Acad Dermatol* 1992; **27**: 227–31.
- 45 Soto J, Arana BA, Toledo J, et al. Miltefosine for New World cutaneous leishmaniasis. *Clin Infect Dis* 2004; **38**: 1266–72.
- 46 Neva FA, Ponce C, Ponce E, Kreutzer R, Modabber F, Olliaro P. Non-ulcerative cutaneous leishmaniasis in Honduras fails to respond to topical paromomycin. *Trans R Soc Trop Med Hyg* 1997; **91**: 473–75.
- 47 Navin TR, Arana BA, Arana FE, Berman JD, Chajon JF. Placebo-controlled clinical trial of sodium stibogluconate (Pentostam) versus ketoconazole for treating cutaneous leishmaniasis in Guatemala. *J Infect Dis* 1992; **165**: 528–34.
- 48 Navin TR, Arana BA, Arana FE, de Merida AM, Castillo AL, Pozuelos JL. Placebo-controlled clinical trial of meglumine antimonate (Glucantime) vs localized controlled heat in the treatment of cutaneous leishmaniasis in Guatemala. *Am J Trop Med Hyg* 1990; **42**: 43–50.
- 49 Dowlati Y. Cutaneous leishmaniasis: clinical aspect. *Clin Dermatol* 1996; **14**: 425–31.
- 50 Soto JM, Toledo JT, Gutierrez P, et al. Treatment of cutaneous leishmaniasis with a topical antileishmanial drug (WR279396): phase 2 pilot study. *Am J Trop Med Hyg* 2002; **66**: 147–51.
- 51 Velez I, Agudelo S, Hendrickx E, et al. Inefficacy of allopurinol as monotherapy for Colombian cutaneous leishmaniasis. A randomized, controlled trial. *Ann Intern Med* 1997; **126**: 232–36.
- 52 Soto-Mancipe J, Grogl M, Berman JD. Evaluation of pentamidine for the treatment of cutaneous leishmaniasis in Colombia. *Clin Infect Dis* 1993; **16**: 417–25.
- 53 Guderian RH, Chico ME, Rogers MD, Pattishall KM, Grogl M, Berman JD. Placebo controlled treatment of Ecuadorian cutaneous leishmaniasis. *Am J Trop Med Hyg* 1991; **45**: 92–97.
- 54 Yanik M, Gurel MS, Simsek Z, Kati M. The psychological impact of cutaneous leishmaniasis. *Clin Exp Dermatol* 2004; **29**: 464–67.
- 55 Saravia NG, Holguin AF, McMahon-Pratt D, D'Alessandro A. Mucocutaneous leishmaniasis in Colombia: *Leishmania braziliensis* subspecies diversity. *Am J Trop Med Hyg* 1985; **34**: 714–20.
- 56 Santrich C, Segura I, Arias AL, Saravia NG. Mucosal disease caused by *Leishmania braziliensis guyanensis*. *Am J Trop Med Hyg* 1990; **42**: 51–55.
- 57 Barral A, Pedral-Sampaio D, Grimaldi Júnior G, et al. Leishmaniasis in Bahia, Brazil: evidence that *Leishmania amazonensis* produces a wide spectrum of clinical disease. *Am J Trop Med Hyg* 1991; **44**: 536–46.
- 58 Kharfi M, Fazaia B, Chaker E, Kamoun MR. Mucosal localization of leishmaniasis in Tunisia: 5 cases. *Ann Dermatol Venereol* 2003; **130**: 27–30.
- 59 Morsy TA, Khalil NM, Salama MM, Hamdi KN, al Shamrany YA, Abdalla KF. Mucosal leishmaniasis caused by *Leishmania tropica* in Saudi Arabia. *J Egypt Soc Parasitol* 1995; **25**: 73–79.
- 60 Aliaga L, Cobo F, Mediavilla JD, et al. Localized mucosal leishmaniasis due to *Leishmania (Leishmania) infantum*: clinical and microbiologic findings in 31 patients. *Medicine (Baltimore)* 2003; **82**: 147–58.
- 61 Marsden PD. Mucosal leishmaniasis (“espundia” Escomel, 1911). *Trans R Soc Trop Med Hyg* 1986; **80**: 859–76.
- 62 Boaventura VS, Café V, Costa J, et al. Concomitant early mucosal and cutaneous leishmaniasis in Brazil. *Am J Trop Med Hyg* 2006; **75**: 267–69.
- 63 Dimier-David L, David C, Munoz M, et al. Epidemiological, clinical and biological features of mucocutaneous leishmaniasis in Bolivia after a 221 patient sample. *Bull Soc Pathol Exot* 1993; **86**: 106–11.
- 64 Rogers ME, Ilg T, Nikolaev AV, Ferguson MA, Bates PA. Transmission of cutaneous leishmaniasis by sandflies is enhanced by regurgitation of PPG. *Nature* 2004; **430**: 463–67.
- 65 Vannier-Santos MA, Martiny A, de Souza W. Cell biology of *Leishmania* spp: invading and evading. *Curr Pharm Des* 2002; **8**: 297–318.
- 66 Basu MK, Ray M. Macrophage and *Leishmania*: an unacceptable coexistence. *Crit Rev Microbiol* 2005; **31**: 145–54.
- 67 Scott P. Immunologic memory in cutaneous leishmaniasis. *Cell Microbiol* 2005; **7**: 1707–13.
- 68 Schubach A, Haddad F, Oliveira-Neto MP, et al. Detection of *Leishmania* DNA by polymerase chain reaction in scars of treated human patients. *J Infect Dis* 1998; **178**: 911–14.
- 69 de Oliveira Camera P, Junger J, do Espirito Santo Silva Pires F, et al. Haematogenous dissemination of *Leishmania (Viannia) braziliensis* in human American tegumentary leishmaniasis. *Trans R Soc Trop Med Hyg* 2006; **100**: 1112–17.
- 70 Saravia NG, Weigle K, Segura I, et al. Recurrent lesions in human *Leishmania braziliensis* infections—reactivation or reinfection? *Lancet* 1990; **336**: 398–402.
- 71 Wortmann GW, Aronson NE, Miller RS, Blazes D, Oster CN. Cutaneous leishmaniasis following local trauma: a clinical pearl. *Clin Infect Dis* 2000; **31**: 199–201.
- 72 Yardley V, Croft SL. Animal models of cutaneous leishmaniasis. In: Zak O, ed. Handbook of animal models of infection. New York: Academic Press, 1999: 775–81.
- 73 Sacks D, Noben-Trauth N. The immunology of susceptibility and resistance to *Leishmania major* in mice. *Nat Rev Immunol* 2002; **2**: 845–58.
- 74 Gummy A, Louis JA, Launois P. The murine model of infection with *Leishmania major* and its importance for the deciphering of mechanisms underlying differences in Th cell differentiation in mice from different genetic backgrounds. *Int J Parasitol* 2004; **34**: 433–44.
- 75 Alexander J, Bryson K. T helper (h)1/Th2 and *Leishmania*: paradox rather than paradigm. *Immunol Lett* 2005; **99**: 17–23.

- 76 Pirmez C, Yamamura M, Uyemura K, Paes-Oliveira M, Conceicao-Silva F, Modlin RL. Cytokine patterns in the pathogenesis of human leishmaniasis. *J Clin Invest* 1993; **91**: 1390–95.
- 77 Ribeiro-de-Jesus A, Almeida RP, Lessa H, Bacellar O, Carvalho EM. Cytokine profile and pathology in human leishmaniasis. *Braz J Med Biol Res* 1998; **31**: 143–48.
- 78 Sassi A, Louzir H, Ben Salah A, Mokni M, Ben Osman A, Dellagi K. Leishmanin skin test lymphoproliferative response and cytokine production after symptomatic or asymptomatic *Leishmania major* infection in Tunisia. *Clin Exp Immunol* 1999; **116**: 127–32.
- 79 Davies CR, Llanos-Cuentas EA, Pyke SD, Dye C. Cutaneous leishmaniasis in the Peruvian Andes: an epidemiological study of infection and immunity. *Epidemiol Infect* 1995; **114**: 297–318.
- 80 Antonelli LR, Dutra WO, Almeida RP, Bacellar O, Carvalho EM, Gollob KJ. Activated inflammatory T cells correlate with lesion size in human cutaneous leishmaniasis. *Immunol Lett* 2005; **101**: 226–30.
- 81 Bosque F, Saravia NG, Valderrama L, Milon G. Distinct innate and acquired immune responses to *Leishmania* in putative susceptible and resistant human populations endemically exposed to *L. (Viannia) panamensis* infection. *Scand J Immunol* 2000; **51**: 533–41.
- 82 Ajdary S, Alimohammadian MH, Eslami MB, Kemp K, Kharazmi A. Comparison of the immune profile of nonhealing cutaneous leishmaniasis patients with those with active lesions and those who have recovered from infection. *Infect Immun* 2000; **68**: 1760–64.
- 83 Louzir H, Melby PC, Ben Salah A, et al. Immunologic determinants of disease evolution in localized cutaneous leishmaniasis due to *Leishmania major*. *J Infect Dis* 1998; **177**: 1687–95.
- 84 Rocha PN, Almeida RP, Bacellar O, et al. Down-regulation of Th1 type of response in early human American cutaneous leishmaniasis. *J Infect Dis* 1999; **180**: 1731–34.
- 85 Bomfim G, Nascimento C, Costa J, Carvalho EM, Barral-Netto M, Barral A. Variation of cytokine patterns related to therapeutic response in diffuse cutaneous leishmaniasis. *Exp Parasitol* 1996; **84**: 188–94.
- 86 Amato VS, de Andrade HF, Duarte MI. Mucosal leishmaniasis: in situ characterization of the host inflammatory response, before and after treatment. *Acta Trop* 2003; **85**: 39–49.
- 87 Saravia NG, Valderrama L, Labrada M, et al. The relationship of *Leishmania braziliensis* subspecies and immune response to disease expression in New World leishmaniasis. *J Infect Dis* 1989; **159**: 725–35.
- 88 Barral-Netto M, Barral A, Brodskyn C, Carvalho EM, Reed SG. Cytotoxicity in human mucosal and cutaneous leishmaniasis. *Para Immunol* 1995; **17**: 21–28.
- 89 Brodskyn CI, Barral A, Boaventura V, Carvalho E, Barral-Netto M. Parasite-driven in vitro human lymphocyte cytotoxicity against autologous infected macrophages from mucosal leishmaniasis. *J Immunol* 1997; **159**: 4467–73.
- 90 Maasho K, Sanchez F, Schurr E, Hailu A, Akuffo H. Indications of the protective role of natural killer cells in human cutaneous leishmaniasis in an area of endemicity. *Infect Immun* 1998; **66**: 2698–704.
- 91 Nylén S, Maasho K, Söderström K, Ilg T, Akuffo H. Live *Leishmania* promastigotes can directly activate primary human natural killer cells to produce interferon-gamma. *Clin Exp Immunol* 2003; **131**: 457–67.
- 92 Boussoffara T, Louzir H, Ben Salah A, Dellagi K. Analysis of granzyme B activity as a surrogate marker of *Leishmania*-specific cell-mediated cytotoxicity in zoonotic cutaneous leishmaniasis. *J Infect Dis* 2004; **189**: 1265–73.
- 93 Kariminia A, Bourreau E, Pascalis H, et al. Transforming growth factor beta 1 production by CD4+ CD25+ regulatory T cells in peripheral blood mononuclear cells from healthy subjects stimulated with *Leishmania guyanensis*. *Infect Immun* 2005; **73**: 5908–14.
- 94 Campanelli AP, Roselino AM, Cavassani KA, et al. CD4+CD25+ T cells in skin lesions of patients with cutaneous leishmaniasis exhibit phenotypic and functional characteristics of natural regulatory T cells. *J Infect Dis* 2006; **193**: 1313–22.
- 95 Guerbouj S, Guizani I, Speybroeck N, Le Ray D, Dujardin JC. Genomic polymorphism of *Leishmania infantum*: a relationship with clinical pleomorphism? *Infect Genet Evol* 2001; **1**: 49–59.
- 96 Schonian G, Akuffo H, Lewin S, et al. Genetic variability within the species *Leishmania aethiopsica* does not correlate with clinical variations of cutaneous leishmaniasis. *Mol Biochem Parasitol* 2000; **106**: 239–48.
- 97 Chang KP, Reed SG, McGwire BS, Soong L. *Leishmania* model for microbial virulence: the relevance of parasite multiplication and pathoantigenicity. *Acta Trop* 2003; **85**: 375–90.
- 98 Rivas L, Moreno J, Canavate C, Alvar J. Virulence and disease in leishmaniasis: what is relevant for the patient? *Trends Parasitol* 2004; **20**: 297–301.
- 99 Colmenares M, Kar S, Goldsmith-Pestana K, McMahon-Pratt D. Mechanisms of pathogenesis: differences amongst *Leishmania* species. *Trans R Soc Trop Med Hyg* 2002; **96** (suppl 1): S3–7.
- 100 Turco SJ, Spath GF, Beverley SM. Is lipophosphoglycan a virulence factor? A surprising diversity between *Leishmania* species. *Trends Parasitol* 2001; **17**: 223–26.
- 101 Teixeira MJ, Fernandes JD, Teixeira CR, et al. Distinct *Leishmania braziliensis* isolates induce different paces of chemokine expression patterns. *Infect Immun* 2005; **73**: 1191–95.
- 102 Dujardin JC, Victoir K, De Doncker S, Guerbouj S, Arevalo J, Le Ray D. Molecular epidemiology and diagnosis of *Leishmania*: what have we learnt from genome structure, dynamics and function? *Trans R Soc Trop Med Hyg* 2002; **96** (suppl 1): S81–86.
- 103 Victoir K, Dujardin JC, de Doncker S, et al. Plasticity of *gp63* gene organization in *Leishmania (Viannia) braziliensis* and *Leishmania (Viannia) peruviana*. *Parasitology* 1995; **111**: 265–73.
- 104 Victoir K, Dujardin JC. How to succeed in parasitic life without sex? Asking *Leishmania*. *Trends Parasitol* 2002; **18**: 81–85.
- 105 Victoir K, Arevalo J, De Doncker S, et al. Complexity of the major surface protease (*mSP*) gene organization in *Leishmania (Viannia) braziliensis*: evolutionary and functional implications. *Parasitology* 2005; **131**: 207–14.
- 106 Garcia L, Kindt A, Bermudez H, et al. Culture-independent species typing of neotropical *Leishmania* for clinical validation of a PCR-based assay targeting heat shock protein 70 genes. *J Clin Microbiol* 2004; **42**: 2294–97.
- 107 Weigel MM, Armijos RX, Zurita C, Racines J, Reddy A, Mosquera J. Nutritional status and cutaneous leishmaniasis in rural Ecuadorian children. *J Trop Pediatr* 1995; **41**: 22–28.
- 108 Handman E, Elso C, Foote S. Genes and susceptibility to leishmaniasis. *Adv Parasitol* 2005; **59**: 1–75.
- 109 Walton BC, Valverde L. Racial differences in espundia. *Ann Trop Med Parasitol* 1977; **73**: 23–29.
- 110 Al-Gindan Y, Abdul-Aziz O, Kubba R. Cutaneous leishmaniasis in Al-Hassa, Saudi Arabia. *Int J Dermatol* 1984; **23**: 194–97.
- 111 Lipoldova M, Demant P. Genetic susceptibility to infectious disease: lessons from mouse models of leishmaniasis. *Nat Rev Genet* 2006; **7**: 294–305.
- 112 Lara ML, Layrisse Z, Scorza JV, et al. Immunogenetics of human American cutaneous leishmaniasis. Study of HLA haplotypes in 24 families from Venezuela. *Hum Immunol* 1991; **30**: 129–35.
- 113 Blackwell JM. Tumour necrosis factor alpha and mucocutaneous leishmaniasis. *Parasitol Today* 1999; **15**: 73–75.
- 114 Sacks D, Kamhawi S. Molecular aspects of parasite-vector and vector-host interactions in leishmaniasis. *Annu Rev Microbiol* 2001; **55**: 453–83.
- 115 Belkaid Y, Valenzuela JG, Kamhawi S, Rowton E, Sacks DL, Ribeiro JM. Delayed-type hypersensitivity to *Phlebotomus papatasi* sandfly bite: an adaptive response induced by the fly? *Proc Natl Acad Sci USA* 2000; **97**: 6704–09.
- 116 Reithinger R, Dujardin JC. Molecular diagnosis of leishmaniasis: current status and future applications. *J Clin Microbiol* 2007; **45**: 21–25.
- 117 Kar K. Serodiagnosis of leishmaniasis. *Crit Rev Microbiol* 1995; **21**: 123–52.
- 118 Weigle KA, deavalos M, Heredia P, Molineros R, Saravia NG, D'Alessandro A. Diagnosis of cutaneous and mucocutaneous leishmaniasis in Colombia: a comparison of seven methods. *Am J Trop Med Hyg* 1987; **36**: 489–96.
- 119 Dedet JP, Melogno R, Cardenas F, et al. Rural campaign to diagnose and treat mucocutaneous leishmaniasis in Bolivia. *Bull World Health Organ* 1995; **73**: 339–45.
- 120 Convit J. Leishmaniasis: immunological and clinical aspects and vaccines in Venezuela. *Clin Dermatol* 1996; **14**: 479–87.

- 121 Roussel M, Nacher M, Fremont G, et al. Comparison between one and two injections of pentamidine isethionate, at 7 mg/kg in each injection, in the treatment of cutaneous leishmaniasis in French Guiana. *Ann Trop Med Parasitol* 2006; **100**: 307–14.
- 122 Lai A Fat EJ, Vrede MA, Soetosenojo RM, Lai A Fat RF. Pentamidine, the drug of choice for the treatment of cutaneous leishmaniasis in Surinam. *Int J Dermatol* 2002; **41**: 796–800.
- 123 Oliveira-Neto MP, Schubach A, Mattos M, Goncalves-Costa SC, Pirmez C. Treatment of American cutaneous leishmaniasis: a comparison between low dosage (5 mg/kg/day) and high dosage (20 mg/kg/day) antimony regimens. *Pathol Biol (Paris)* 1997; **45**: 496–99.
- 124 Berman JD. Human leishmaniasis: clinical, diagnostic, and chemotherapeutic developments in the last 10 years. *Clin Infect Dis* 1997; **24**: 684–703.
- 125 Croft SL, Yardley V. Chemotherapy of leishmaniasis. *Curr Pharm Des* 2002; **8**: 319–42.
- 126 Franke ED, Wignall FS, Cruz ME, et al. Efficacy and toxicity of sodium stibogluconate for mucosal leishmaniasis. *Ann Intern Med* 1990; **113**: 934–40.
- 127 Yardley V, Ortuno N, Llanos-Cuentas A, et al. American tegumentary leishmaniasis: is antimonial treatment outcome related to parasite drug susceptibility? *J Infect Dis* 2006; **194**: 1168–75.
- 128 Reithinger R, Mohsen M, Wahid M, et al. Efficacy of chemotherapy to treat cutaneous leishmaniasis caused by *Leishmania tropica* in Kabul, Afghanistan: a randomized, controlled trial. *Clin Infect Dis* 2005; **40**: 1148–55.
- 129 Martinez S, Marr JJ. Allopurinol in the treatment of American cutaneous leishmaniasis. *N Engl J Med* 1992; **326**: 741–44.
- 130 Palacios R, Osorio LE, Grajales LF, Ochoa MT. Treatment failure in children in a randomized clinical trial with 10 and 20 days of meglumine antimonate for cutaneous leishmaniasis due to *Leishmania Viannia* species. *Am J Trop Med Hyg* 2001; **64**: 187–93.
- 131 Arana BA, Navin TR, Arana FE, Berman JD, Rosenkaimer F. Efficacy of a short course (10 days) of high-dose meglumine antimonate with or without interferon-gamma in treating cutaneous leishmaniasis in Guatemala. *Clin Infect Dis* 1994; **18**: 381–84.
- 132 Wortmann G, Miller RS, Oster C, Jackson J, Aronson N. A randomized, double-blind study of the efficacy of a 10- or 20-day course of sodium stibogluconate for treatment of cutaneous leishmaniasis in United States military personnel. *Clin Infect Dis* 2002; **35**: 261–67.
- 133 Llanos-Cuentas A, Echevarria J, Cruz M, et al. Efficacy of sodium stibogluconate alone and in combination with allopurinol for treatment of mucocutaneous leishmaniasis. *Clin Infect Dis* 1997; **25**: 677–84.
- 134 Alkhawajah AM, Larbi E, al-Gindan Y, Abahusseini A, Jain S. Treatment of cutaneous leishmaniasis with antimony: intramuscular versus intraleisional administration. *Ann Trop Med Parasitol* 1997; **91**: 899–905.
- 135 Andersen EM, Cruz-Saldarriaga M, Llanos-Cuentas A, et al. Comparison of meglumine antimonate and pentamidine for Peruvian cutaneous leishmaniasis. *Am J Trop Med Hyg* 2005; **72**: 133–37.
- 136 de Paula CD, Sampaio JH, Cardoso DR, Sampaio RN. A comparative study between the efficacy of pentamidine isothionate given in three doses for one week and N-methylglucamine in a dose of 20mgSbV/day for 20 days to treat cutaneous leishmaniasis. *Rev Soc Bras Med Trop* 2003; **36**: 365–71 (in Portuguese).
- 137 Soto J, Toledo J, Valda L, et al. Treatment of Bolivian mucosal leishmaniasis with miltefosine. *Clin Infect Dis* 2007; **44**: 350–56.
- 138 Hepburn NC, Tidman MJ, Hunter JA. Aminosidine (paromomycin) versus sodium stibogluconate for the treatment of American cutaneous leishmaniasis. *Trans R Soc Trop Med Hyg* 1994; **88**: 700–03.
- 139 el-Safi SH, Murphy AG, Bryceson AD, Neal RA. A double-blind clinical trial of the treatment of cutaneous leishmaniasis with paromomycin ointment. *Trans R Soc Trop Med Hyg* 1990; **84**: 690–91.
- 140 Weinrauch L, Cawich F, Craig P, Sosa JX, el-On J. Topical treatment of New World cutaneous leishmaniasis in Belize: a clinical study. *J Am Acad Dermatol* 1993; **29**: 443–46.
- 141 Arana BA, Mendoza CE, Rizzo NR, Kroeger A. Randomized, controlled, double-blind trial of topical treatment of cutaneous leishmaniasis with paromomycin plus methylbenzethonium chloride ointment in Guatemala. *Am J Trop Med Hyg* 2001; **65**: 466–70.
- 142 Shazad B, Abbaszadeh B, Khamesipour A. Comparison of topical paromomycin sulfate (twice/day) with intraleisional meglumine antimonate for the treatment of cutaneous leishmaniasis caused by *L major*. *Eur J Dermatol* 2005; **15**: 85–87.
- 143 Iraj F, Sadeghinia A. Efficacy of paromomycin ointment in the treatment of cutaneous leishmaniasis: results of a double-blind, randomized trial in Isfahan, Iran. *Ann Trop Med Parasitol* 2005; **99**: 3–9.
- 144 Armijos RX, Weigel MM, Calvopina M, Mancheno M, Rodriguez R. Comparison of the effectiveness of two topical paromomycin treatments versus meglumine antimonate for New World cutaneous leishmaniasis. *Acta Trop* 2004; **91**: 153–60.
- 145 Dogra J. A double-blind study on the efficacy of oral dapsone in cutaneous leishmaniasis. *Trans R Soc Trop Med Hyg* 1991; **85**: 212–13.
- 146 Dogra J, Saxena VN. Itraconazole and leishmaniasis: a randomised double-blind trial in cutaneous disease. *Int J Parasitol* 1996; **26**: 1413–15.
- 147 Saenz RE, Paz H, Berman JD. Efficacy of ketoconazole against *Leishmania braziliensis panamensis* cutaneous leishmaniasis. *Am J Med* 1990; **89**: 147–55.
- 148 Salmanpour R, Handjani F, Nouhpisheh MK. Comparative study of the efficacy of oral ketoconazole with intra-lesional meglumine antimonate (Glucantime) for the treatment of cutaneous leishmaniasis. *J Dermatolog Treat* 2001; **12**: 159–62.
- 149 Sharquie KE, Najim RA, Farjou IB, Al-Timimi DJ. Oral zinc sulphate in the treatment of acute cutaneous leishmaniasis. *Clin Exp Dermatol* 2001; **26**: 21–26.
- 150 Asilian A, Sadeghinia A, Faghihi G, Momeni A. Comparative study of the efficacy of combined cryotherapy and intraleisional meglumine antimonate (Glucantime) vs cryotherapy and intraleisional meglumine antimonate (Glucantime) alone for the treatment of cutaneous leishmaniasis. *Int J Dermatol* 2004; **43**: 281–83.
- 151 Harms G, Chehade AK, Douba M, et al. A randomized trial comparing a pentavalent antimonial drug and recombinant interferon-gamma in the local treatment of cutaneous leishmaniasis. *Trans R Soc Trop Med Hyg* 1991; **85**: 214–16.
- 152 Firooz A, Khatami A, Khamesipour A, et al. Intraleisional injection of 2% zinc sulfate solution in the treatment of acute old world cutaneous leishmaniasis: a randomized, double-blind, controlled clinical trial. *J Drugs Dermatol* 2005; **4**: 73–79.
- 153 Sharquie KE, Najim RA, Farjou IB. A comparative controlled trial of intraleisionally-administered zinc sulphate, hypertonic sodium chloride and pentavalent antimony compound against acute cutaneous leishmaniasis. *Clin Exp Dermatol* 1997; **22**: 169–73.
- 154 Franke ED, Llanos-Cuentas A, Echevarria J, et al. Efficacy of 28-day and 40-day regimens of sodium stibogluconate (Pentostam) in the treatment of mucosal leishmaniasis. *Am J Trop Med Hyg* 1994; **51**: 77–82.
- 155 Oliveira-Neto MP, Schubach A, Mattos M, da Costa SC, Pirmez C. Intraleisional therapy of American cutaneous leishmaniasis with pentavalent antimony in Rio de Janeiro, Brazil—an area of *Leishmania (V) braziliensis* transmission. *Int J Dermatol* 1997; **36**: 463–68.
- 156 Solano E, Hidalgo H, Zeledon R. Successful intraleisional treatment of leishmaniasis caused by *Leishmania brasiliensis panamensis* using glucantime. *Med Cutan Ibero Lat Am* 1984; **12**: 19–24 (in Spanish).
- 157 Reithinger R, Coleman PG. Treating cutaneous leishmaniasis patients in Kabul, Afghanistan: cost-effectiveness of an operational program in a complex emergency setting. *BMC Infect Dis* 2007; **7**: 3.
- 158 Yardley V, Croft SL. A comparison of the activities of three amphotericin B lipid formulations against experimental visceral and cutaneous leishmaniasis. *Int J Antimicrob Agents* 2000; **13**: 243–48.
- 159 Nonata R, Sampaio R, Marsden PD. Mucosal leishmaniasis unresponsive to glucantime therapy successfully treated with AmBisome. *Trans R Soc Trop Med Hyg* 1997; **91**: 77.

- 160 Amato VS, Rabello A, Rotondo-Silva A, et al. Successful treatment of cutaneous leishmaniasis with lipid formulations of amphotericin B in two immunocompromised patients. *Acta Trop* 2004; **92**: 127–32.
- 161 Yardley V, Croft SL, De Doncker S, et al. The sensitivity of clinical isolates of *Leishmania* from Peru and Nepal to miltefosine. *Am J Trop Med Hyg* 2005; **73**: 272–75.
- 162 Alexander B, Maroli M. Control of phlebotomine sandflies. *Med Vet Entomol* 2003; **17**: 1–18.
- 163 Kolaczinski JH, Muhammad N, Khan QS, et al. Subsidized sales of insecticide-treated nets in Afghan refugee camps demonstrate the feasibility of a transition from humanitarian aid towards sustainability. *Malar J* 2004; **3**: 15.
- 164 Surendran SN, Karunaratne SH, Adams Z, Hemingway J, Hawkes NJ. Molecular and biochemical characterization of a sandfly population from Sri Lanka: evidence for insecticide resistance due to altered esterases and insensitive acetylcholinesterase. *Bull Entomol Res* 2005; **95**: 371–80.
- 165 Reyburn H, Ashford R, Mohsen M, Hewitt S, Rowland M. A randomized controlled trial of insecticide-treated bednets and chaddars or top sheets, and residual spraying of interior rooms for the prevention of cutaneous leishmaniasis in Kabul, Afghanistan. *Trans R Soc Trop Med Hyg* 2000; **94**: 361–66.
- 166 Alten B, Caglar SS, Kaynas S, Simsek FM. Evaluation of protective efficacy of K-OTAB impregnated bednets for cutaneous leishmaniasis control in Southeast Anatolia-Turkey. *J Vect Ecol* 2003; **28**: 53–64.
- 167 Yaghoobi-Ershadi MR, Moosa-Kazemi SH, Zahraei-Ramazani AR, et al. Evaluation of deltamethrin-impregnated bed nets and curtains for control of zoonotic cutaneous leishmaniasis in a hyperendemic area of Iran. *Bull Soc Pathol Exot* 2006; **99**: 43–48.
- 168 Jalouk L, Al Ahmed M, Gradoni L, Maroli M. Insecticide-treated bednets to prevent anthroponotic cutaneous leishmaniasis in Aleppo Governorate, Syria: results from two trials. *Trans R Soc Trop Med Hyg* 2007; **101**: 360–07.
- 169 Kroeger A, Avila EV, Morison L. Insecticide impregnated curtains to control domestic transmission of cutaneous leishmaniasis in Venezuela: cluster randomised trial. *BMJ* 2002; **325**: 810–13.
- 170 Naucke TJ, Lorentz S, Grunewald HW. Laboratory testing of the insect repellents IR3535(R) and DEET against *Phlebotomus mascittii* and *P duboscqi* (Diptera: Psychodidae). *Int J Med Microbiol* 2006; **296** (suppl 1): 230–32.
- 171 Gavgani AS, Hodjati MH, Mohite H, Davies CR. Effect of insecticide-impregnated dog collars on incidence of zoonotic visceral leishmaniasis in Iranian children: a matched-cluster randomised trial. *Lancet* 2002; **360**: 374–79.
- 172 Reithinger R, Ceballos L, Stariolo R, Davies CR, Gurtler RE. Extinction of experimental *Triatoma infestans* populations following continuous exposure to dogs wearing deltamethrin-treated collars. *Am J Trop Med Hyg* 2006; **74**: 766–71.
- 173 Khamesipour A, Rafati S, Davoudi N, Maboudi F, Modabber F. Leishmaniasis vaccine candidates for development: a global overview. *Indian J Med Res* 2006; **123**: 423–38.
- 174 Coler RN, Reed SG. Second-generation vaccines against leishmaniasis. *Trends Parasitol* 2005; **21**: 244–49.
- 175 Requena JM, Iborra S, Carrion J, Alonso C, Soto M. Recent advances in vaccines for leishmaniasis. *Expert Opin Biol Ther* 2004; **4**: 1505–17.
- 176 Khamesipour A, Dowlati Y, Asilian A, et al. Leishmanization: use of an old method for evaluation of candidate vaccines against leishmaniasis. *Vaccine* 2005; **23**: 3642–48.
- 177 Ben Salah A, Louzir H, Chlif S, et al. The predictive validity of naturally acquired delayed type hypersensitivity to leishmanin in the resistance against *Leishmania major* cutaneous leishmaniasis. *J Infect Dis* 2005; **192**: 1981–87.
- 178 Kubar J, Fragaki K. Recombinant DNA-derived *Leishmania* proteins: from the laboratory to the field. *Lancet Infect Dis* 2005; **5**: 107–14.
- 179 Kamhawi S, Belkaid Y, Modi G, Rowton E, Sacks D. Protection against cutaneous leishmaniasis resulting from bites of uninfected sandflies. *Science* 2000; **290**: 1351–54.
- 180 Valenzuela JG, Belkaid Y, Garfield MK, et al. Toward a defined anti-*Leishmania* vaccine targeting vector antigens: characterization of a protective salivary protein. *J Exp Med* 2001; **194**: 331–42.
- 181 Ivens AC, Peacock CS, Worthey EA, et al. The genome of the kinetoplastid parasite, *Leishmania major*. *Science* 2005; **309**: 436–42.
- 182 Dillon RJ, Ivens AC, Churcher C, et al. Analysis of ESTs from *Lutzomyia longipalpis* sand flies and their contribution toward understanding the insect-parasite relationship. *Genomics* 2006; **88**: 831–40.
- 183 Alvar J, Yactayo S, Bern C. Leishmaniasis and poverty. *Trends Parasitol* 2006; **22**: 552–57.